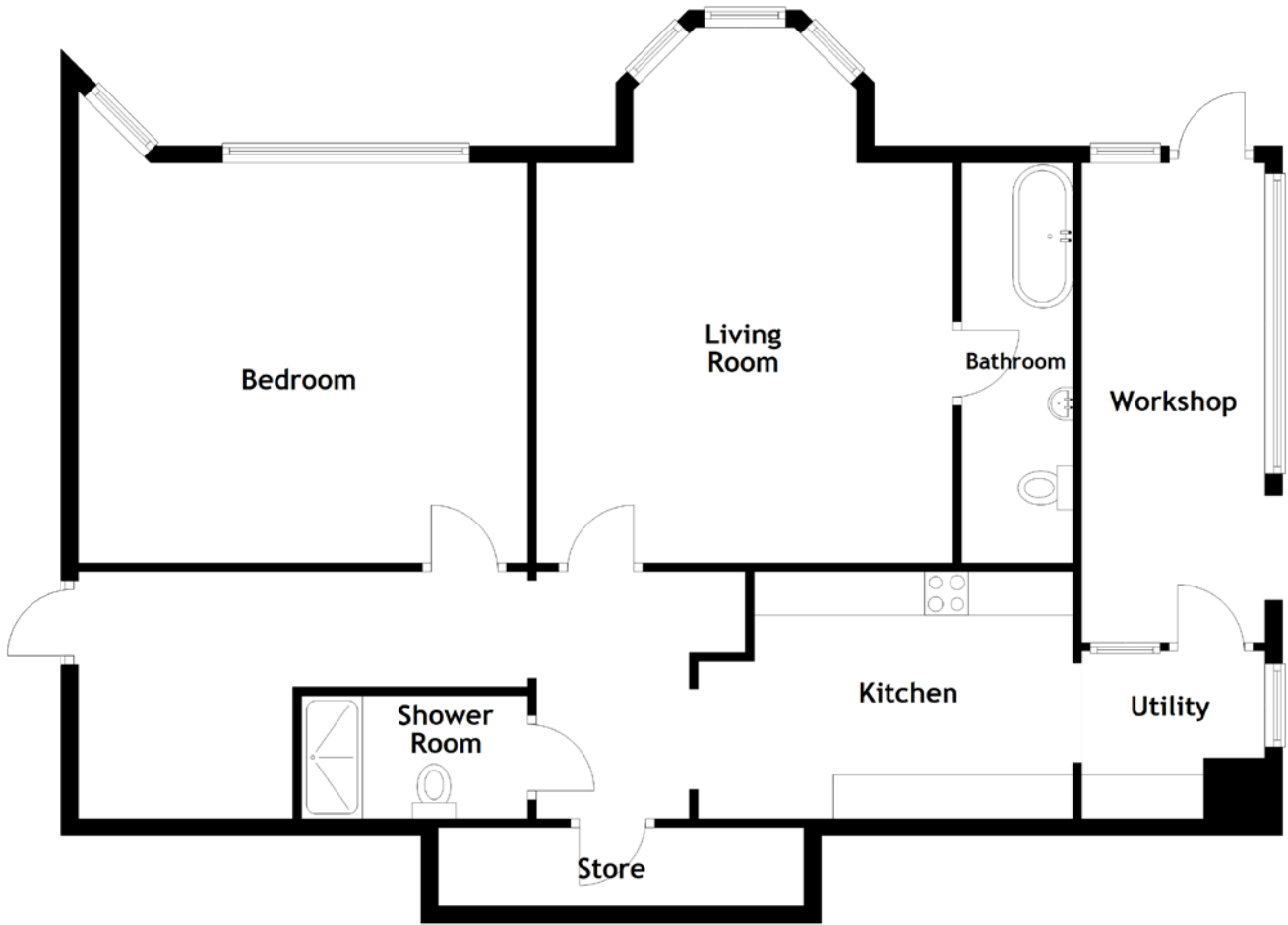


FLOOR PLAN, DIMENSIONS & MAP



Approximate Dimensions
(Taken from the widest point)

Living Room 6.13m (20'1") x 4.77m (15'8")
 Bathroom 4.58m (15') x 1.27m (4'2")
 Shower Room 2.59m (8'6") x 1.41m (4'7")
 Kitchen 4.29m (14'1") x 2.83m (9'3")

Utility 2.10m (6'11") x 1.92m (6'3")
 Bedroom 6.13m (20'1") x 5.15m (16'11")
 Workshop 5.49m (18') x 2.10m (6'11")
 Store 4.19m (13'9") x 0.90m (2'11")

Gross internal floor area (m²): 100m²
 EPC Rating: E

