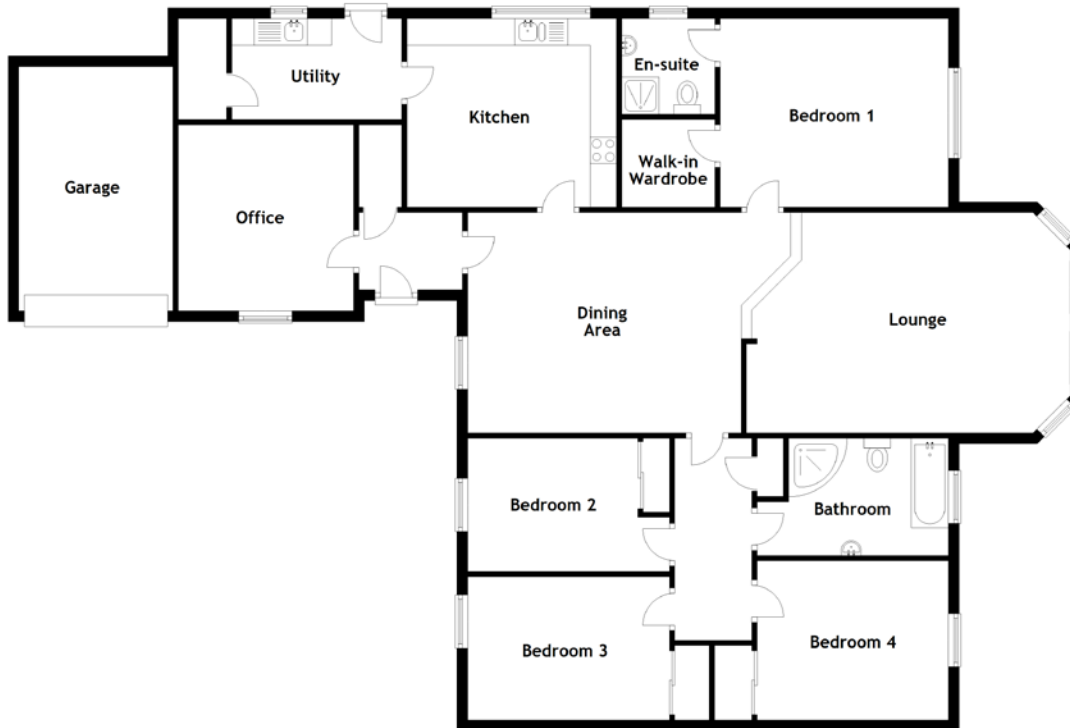


# 11 Bridges View

DUNFERMLINE, KY12 0GA



Approximate Dimensions  
(Taken from the widest point)

Lounge	6.10m (20') x 4.15m (13'7")
Dining Area	6.29m (20'8") x 4.15m (13'7")
Kitchen	3.95m (13') x 3.60m (11'10")
Utility	3.20m (10'6") x 1.90m (6'3")
Office	3.50m (11'6") x 3.30m (10'10")
Bedroom 1	4.30m (14'1") x 3.55m (11'8")
En-suite	1.80m (5'11") x 1.75m (5'9")
Walk-in Wardrobe	1.75m (5'9") x 1.70m (5'7")
Bathroom	3.60m (11'10") x 2.20m (7'3")
Bedroom 2	3.80m (12'6") x 2.50m (8'3")
Bedroom 3	3.80m (12'6") x 2.75m (9')
Bedroom 4	3.60m (11'10") x 3.00m (9'10")
Garage	4.60m (15'1") x 2.90m (9'6")

Gross internal floor area (m<sup>2</sup>): 154m<sup>2</sup>  
EPC Rating: B

Extras (Included in the sale): Floor coverings, light fittings and blinds.