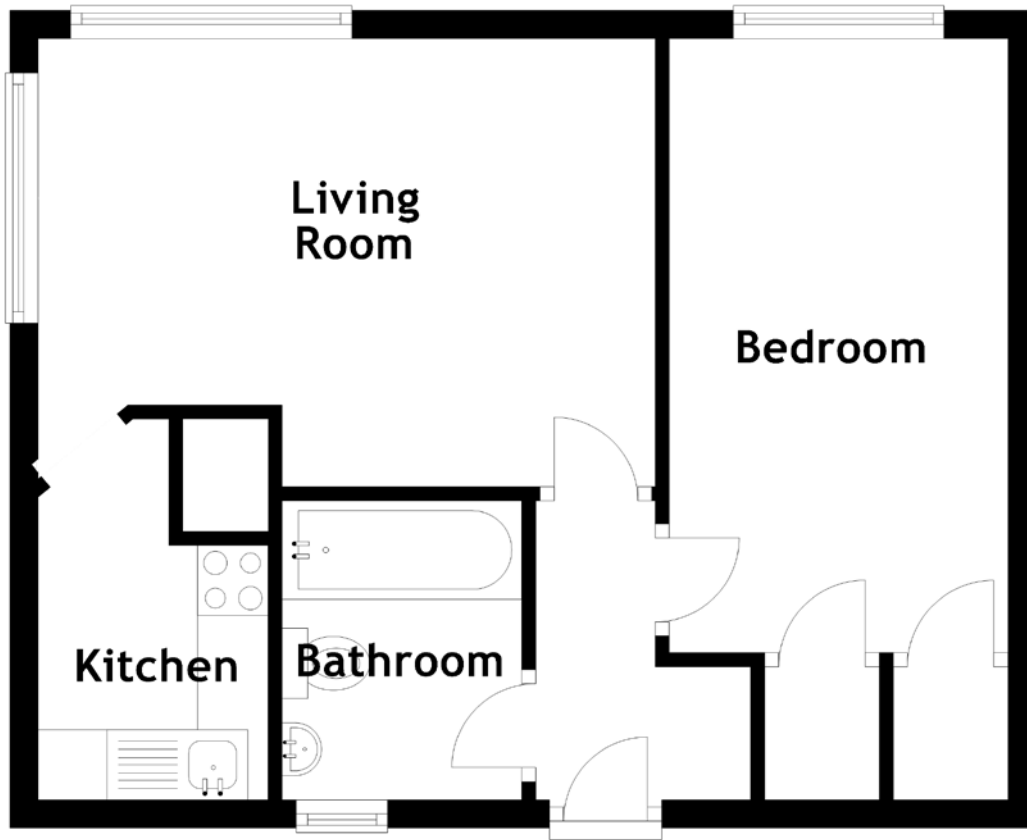


FLOOR PLAN, DIMENSIONS & MAP



Approximate Dimensions
(Taken from the widest point)

Living Room 4.39m (14'5") x 3.19m (10'6")
 Kitchen 2.71m (8'11") x 1.55m (5'1")
 Bedroom 4.37m (14'4") x 2.41m (7'11")

Bathroom 2.13m (7') x 1.71m (5'7")

Gross internal floor area (m²): 37m²
 EPC Rating: D

Buyer's Premium Value: £2800.00

