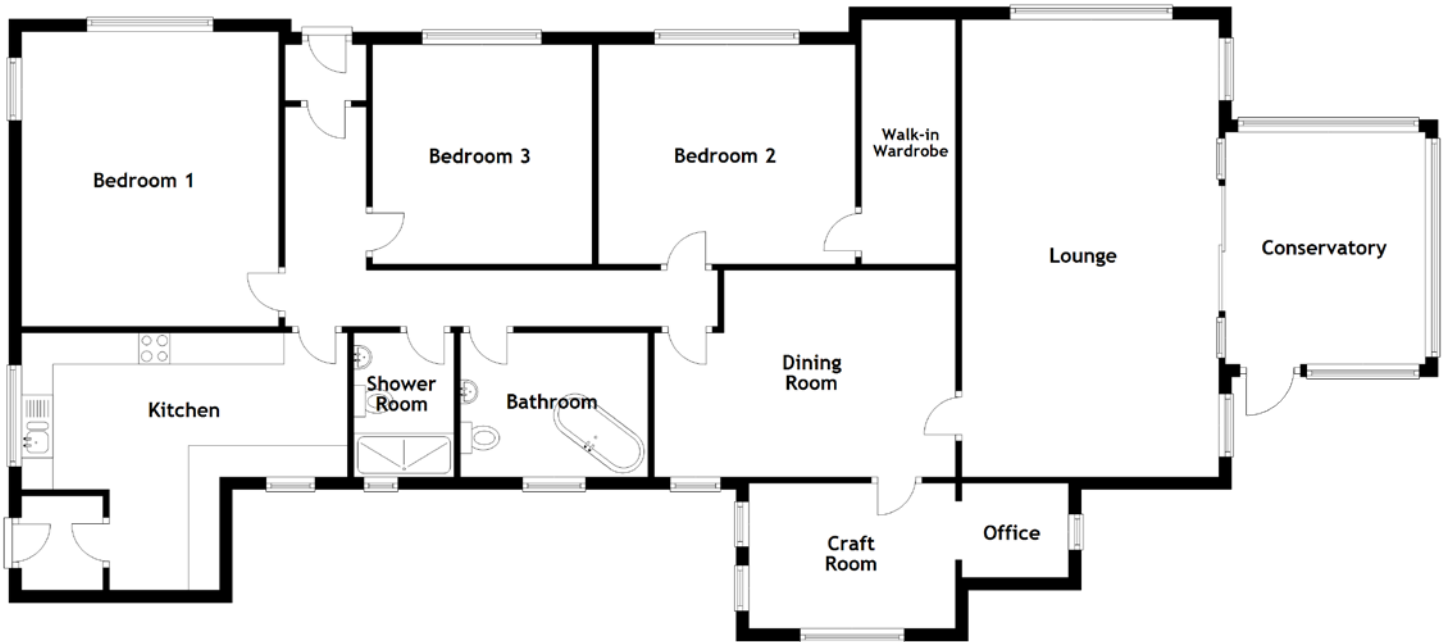


FLOOR PLAN, DIMENSIONS & MAP



Approximate Dimensions (Taken from the widest point)

Lounge	7.30m (23'11") x 4.10m (13'5")
Conservatory	3.70m (12'2") x 3.20m (10'6")
Dining Room	4.80m (15'9") x 3.50m (11'6")
Craft Room	3.30m (10'10") x 2.32m (7'7")
Office	1.70m (5'7") x 1.50m (4'11")
Kitchen	5.20m (17'1") x 4.10m (13'5")

Bedroom 1	4.70m (15'5") x 4.10m (13'5")
Bedroom 2	4.10m (13'5") x 3.50m (11'6")
Walk-in Wardrobe	3.90m (12'9") x 1.50m (4'11")
Bedroom 3	3.50m (11'6") x 3.50m (11'6")
Shower Room	2.30m (7'7") x 1.60m (5'3")
Bathroom	3.00m (9'10") x 2.30m (7'7")

Gross internal floor area (m²): 165m² | EPC Rating: E

