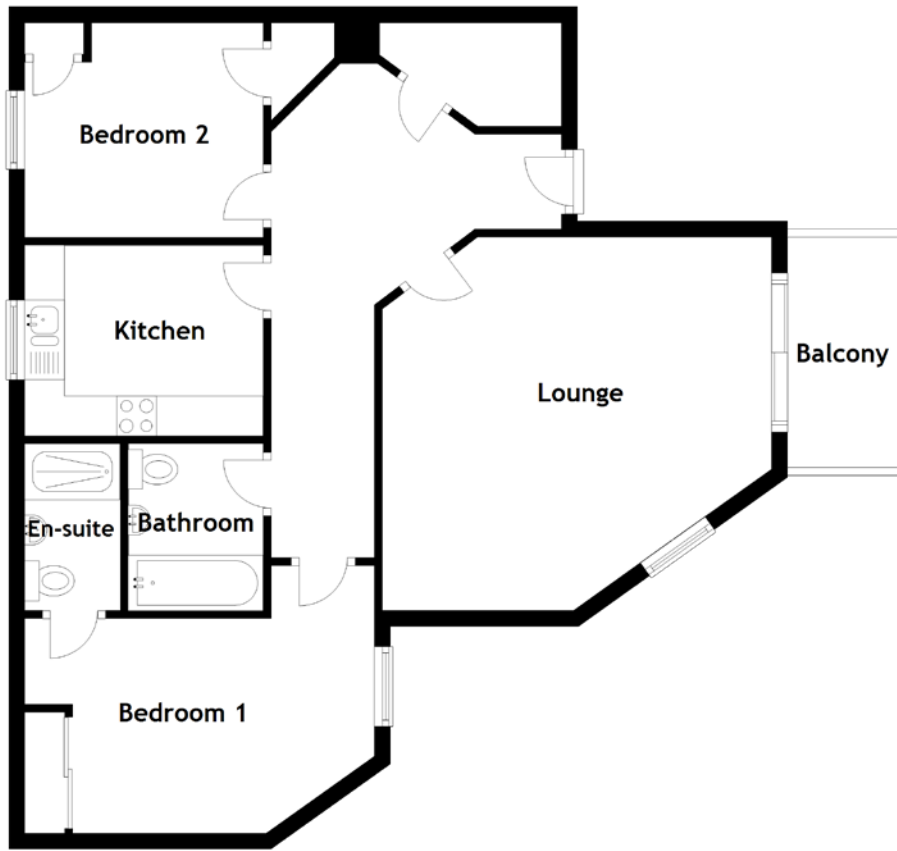


# FLOOR PLAN, DIMENSIONS & MAP



Approximate Dimensions (Taken from the widest point)

Lounge 4.90m (16'1") x 4.70m (15'5")  
 Balcony 2.90m (9'6") x 1.50m (4'11")  
 Kitchen 3.00m (9'10") x 2.40m (7'10")  
 Bathroom 2.10m (6'11") x 1.70m (5'7")

Bedroom 1 4.40m (14'5") x 2.70m (8'10")  
 En-suite 2.10m (6'11") x 1.20m (3'11")  
 Bedroom 2 3.00m (9'10") x 2.70m (8'10")

Gross internal floor area (m<sup>2</sup>): 65m<sup>2</sup>  
 EPC Rating: C

