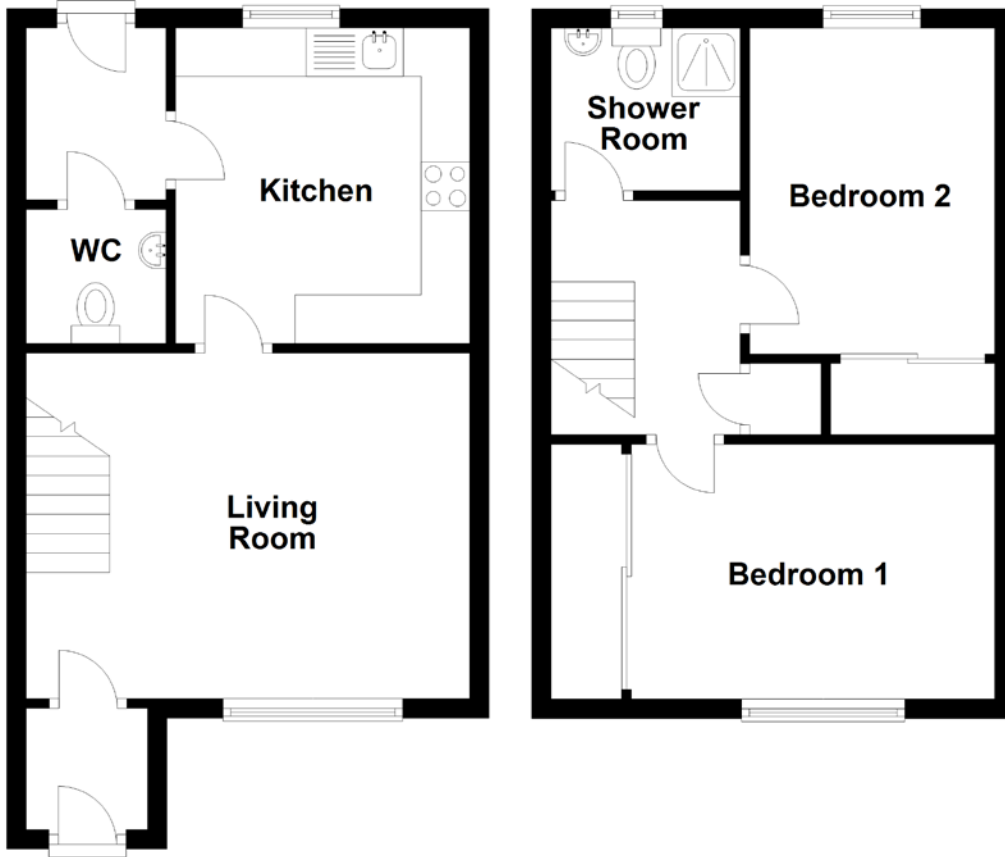


FLOOR PLAN, DIMENSIONS & MAP



Approximate Dimensions (Taken from the widest point)

Living Room 4.57m (15') x 3.56m (11'8")
 Kitchen 3.25m (10'8") x 3.03m (9'11")
 WC 1.52m (5') x 1.44m (4'9")

Bedroom 1 3.74m (12'3") x 2.62m (8'7")
 Bedroom 2 3.35m (11') x 2.52m (8'3")
 Shower Room 2.08m (6'10") x 1.67m (5'6")

Gross internal floor area (m²): 68m² | EPC Rating: C

