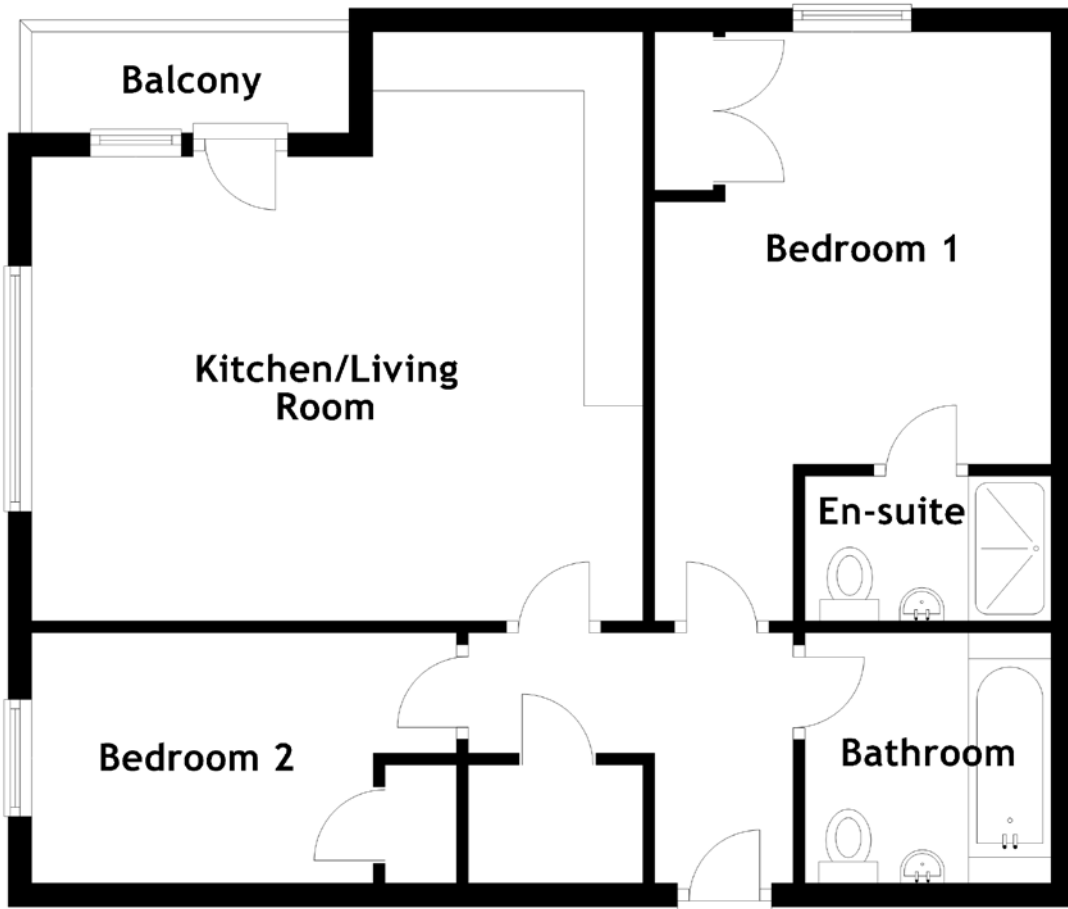


# FLOOR PLAN, DIMENSIONS & MAP



Approximate Dimensions  
(Taken from the widest point)

Kitchen/Living Room 5.18m (17') x 4.99m (16'4")  
 Balcony 2.69m (8'10") x 0.86m (2'10")  
 Bathroom 2.12m (6'11") x 2.09m (6'10")

Bedroom 1 4.99m (16'4") x 3.36m (11')  
 En-suite 2.09m (6'10") x 1.23m (4')  
 Bedroom 2 3.60m (11'10") x 2.12m (6'11")

Gross internal floor area (m<sup>2</sup>): 60m<sup>2</sup>  
 EPC Rating: B

