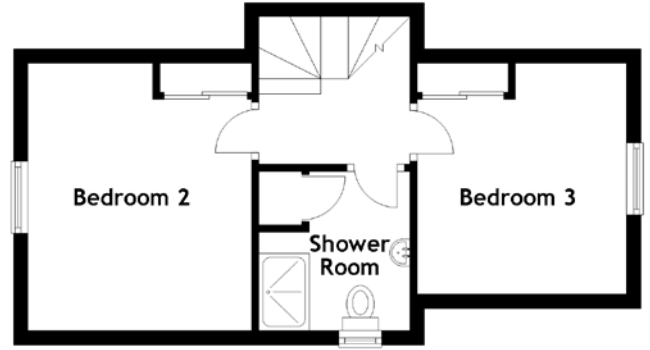
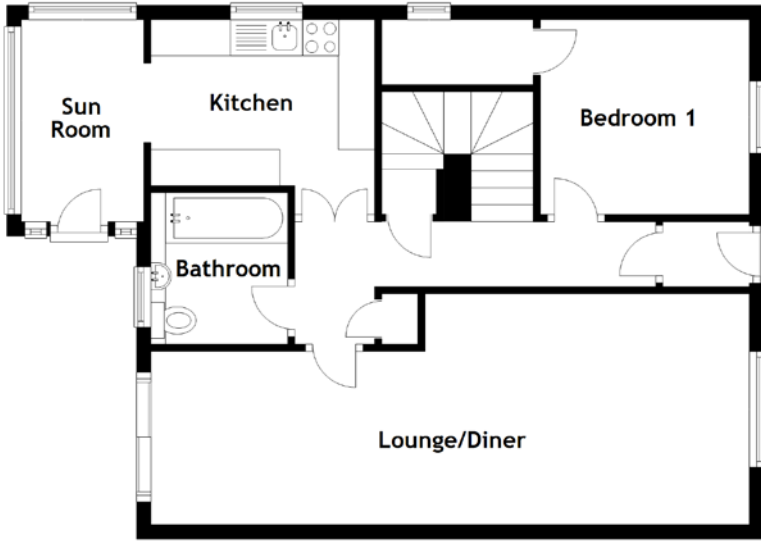


# FLOOR PLAN, DIMENSIONS & MAP



Approximate Dimensions  
(Taken from the widest point)

Lounge/Diner	8.30m (27'3") x 3.20m (10'6")
Kitchen	3.10m (10'2") x 2.00m (6'7")
Sun Room	2.80m (9'2") x 1.70m (5'7")
Bathroom	2.10m (6'11") x 1.90m (6'3")

Bedroom 1	2.90m (9'6") x 2.70m (8'10")
Shower Room	2.20m (7'3") x 2.10m (6'11")
Bedroom 2	3.70m (12'2") x 3.10m (10'2")
Bedroom 3	3.20m (10'6") x 2.90m (9'6")

Gross internal floor area (m<sup>2</sup>): 90m<sup>2</sup>  
EPC Rating: D

