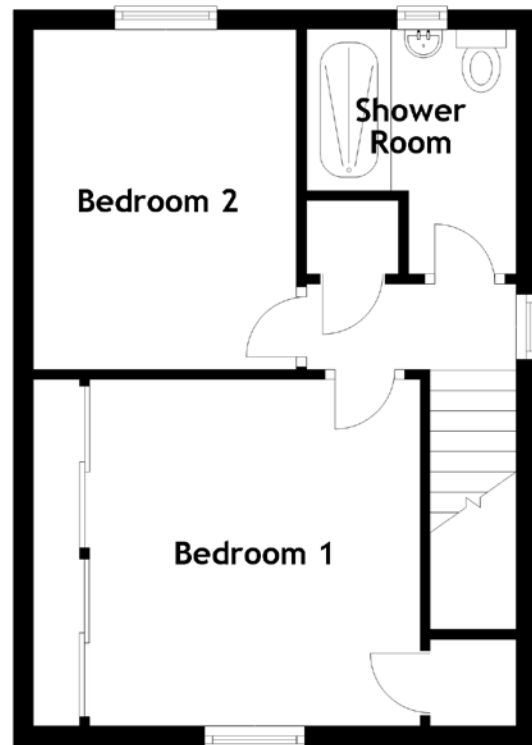
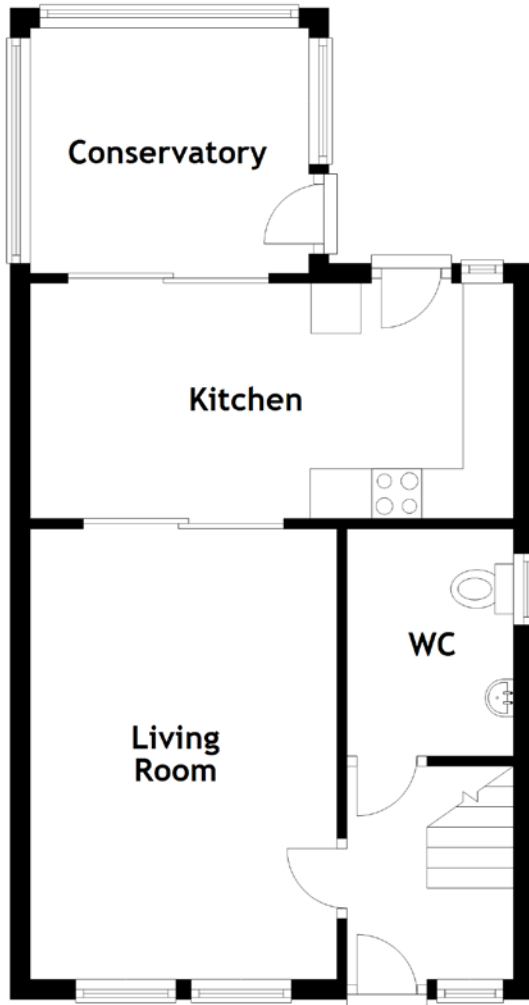


# FLOOR PLAN, DIMENSIONS & MAP



Approximate Dimensions (Taken from the widest point)

|              |                               |
|--------------|-------------------------------|
| Living Room  | 3.06m (10') x 3.06m (10')     |
| Kitchen      | 4.82m (15'10") x 2.35m (7'9") |
| Conservatory | 2.78m (9'1") x 2.45m (8')     |
| WC           | 2.20m (7'3") x 1.66m (5'5")   |

Shower Room

2.44m (8') x 2.09m (6'10")

Bedroom 1

3.46m (11'4") x 3.30m (10'10")

Bedroom 2

3.39m (11'2") x 2.63m (8'7")

Gross internal floor area (m<sup>2</sup>): 79m<sup>2</sup>

EPC Rating: C

