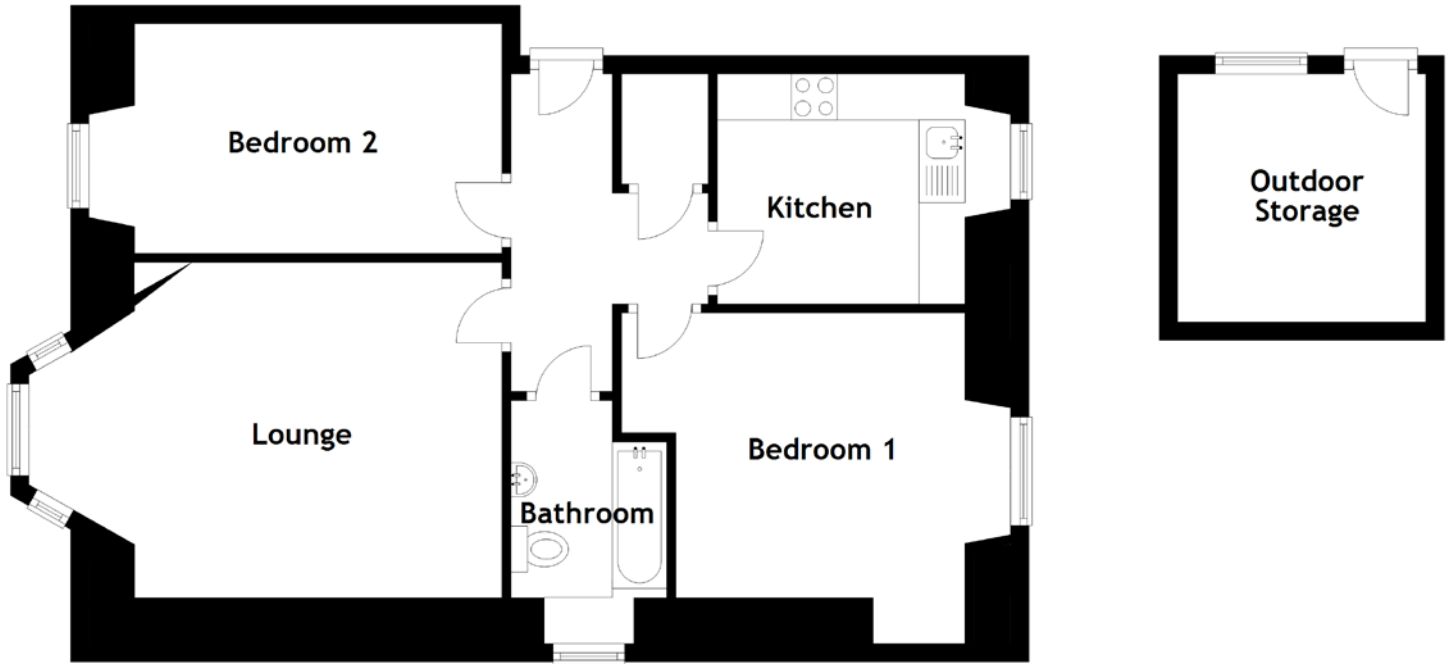


FLOOR PLAN, DIMENSIONS & MAP



Approximate Dimensions (Taken from the widest point)

Lounge	4.00m (13'1") x 3.65m (12')
Kitchen	2.70m (8'10") x 2.50m (8'3")
Bathroom	2.15m (7'1") x 1.70m (5'7")
Bedroom 1	3.75m (12'3") x 3.60m (11'10")
Bedroom 2	4.00m (13'1") x 2.50m (8'2")

Outdoor Storage

2.70m (8'10") x 2.70m (8'10")

Gross internal floor area (m²): 56m²
EPC Rating: D

Extras: Carpets and floor coverings, light fixtures and fittings, curtains and blinds.

