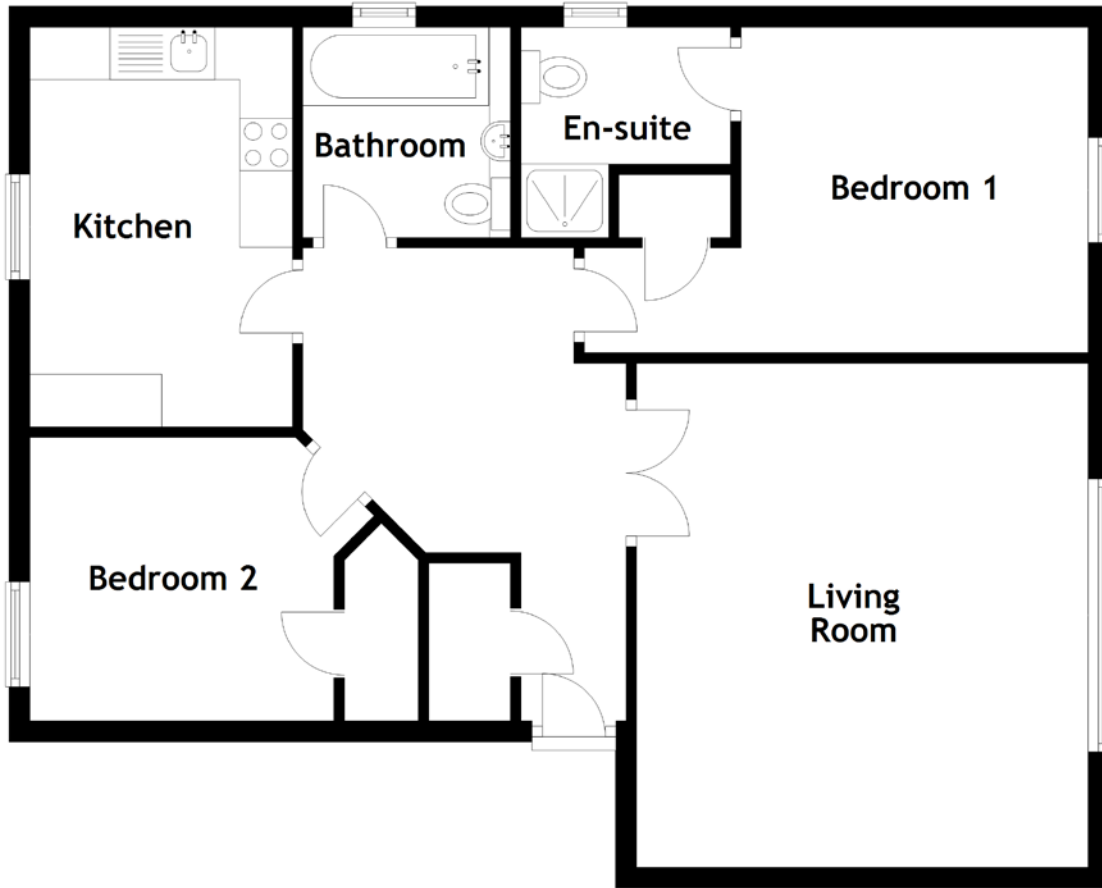


FLOOR PLAN, DIMENSIONS & MAP



Approximate Dimensions
(Taken from the widest point)

Living Room 4.80m (15'9") x 4.30m (14'1")
 Kitchen 3.80m (12'6") x 2.50m (8'2")
 Bathroom 2.00m (6'7") x 1.98m (6'6")

Bedroom 1 4.80m (15'9") x 3.10m (10'2")
 En-suite 2.00m (6'7") x 2.00m (6'7")
 Bedroom 2 2.90m (9'6") x 2.70m (8'10")

Gross internal floor area (m²): 68m²
 EPC Rating: C

