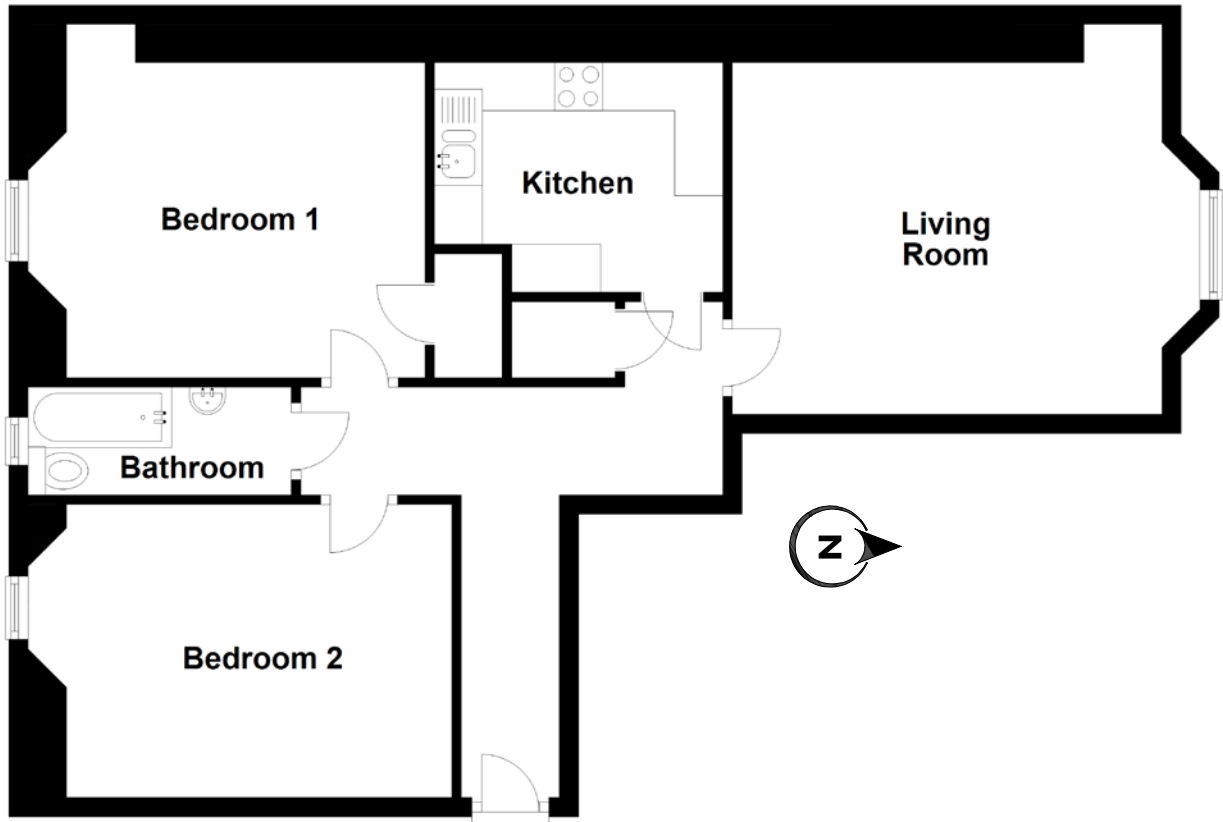


FLOOR PLAN, DIMENSIONS & MAP



Approximate Dimensions (Taken from the widest point)

Living Room 4.77m (15'8") x 3.66m (12')
Kitchen 3.00m (9'10") x 2.39m (7'10")
Bedroom 1 3.73m (12'3") x 3.28m (10'9")

Bedroom 2 4.01m (13'2") x 3.05m (10')
Bathroom 2.74m (9') x 1.12m (3'8")

Gross internal floor area (m²): 67m²
EPC Rating: C

