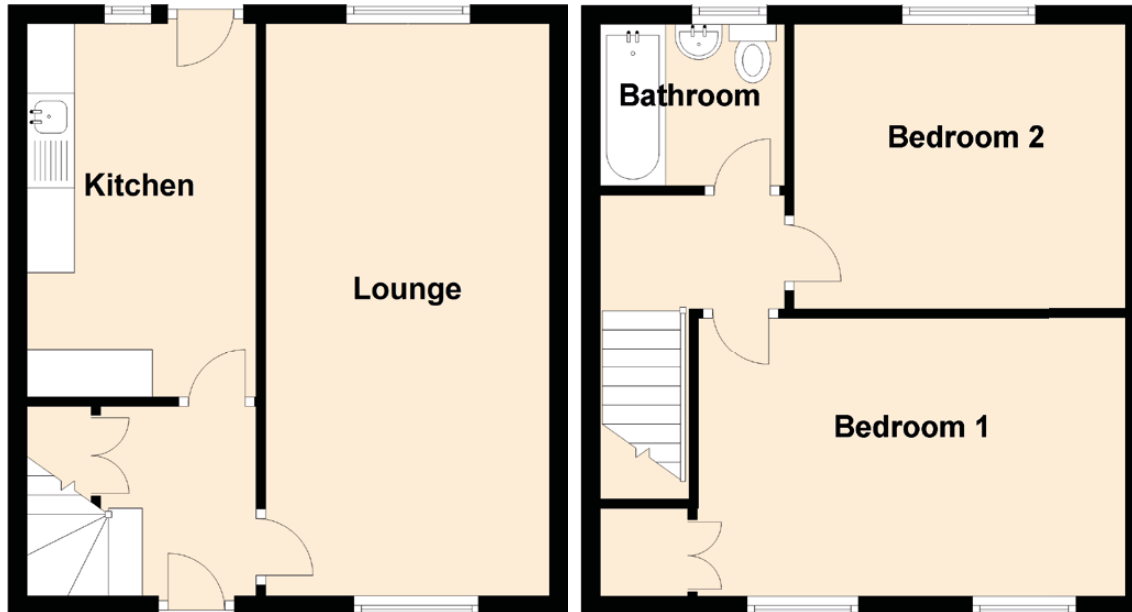


33 Polton Avenue Road

BONNYRIGG, MIDLOTHIAN, EH19 2PB



Approximate Dimensions (Taken from the widest point)

Lounge	6.04m (19'10") x 3.00m (9'10")
Kitchen	3.94m (12'11") x 2.42m (7'11")
Bedroom 1	4.56m (15') x 2.97m (9'9")
Bedroom 2	3.54m (11'7") x 3.03m (9'11")
Bathroom	1.97m (6'6") x 1.72m (5'8")