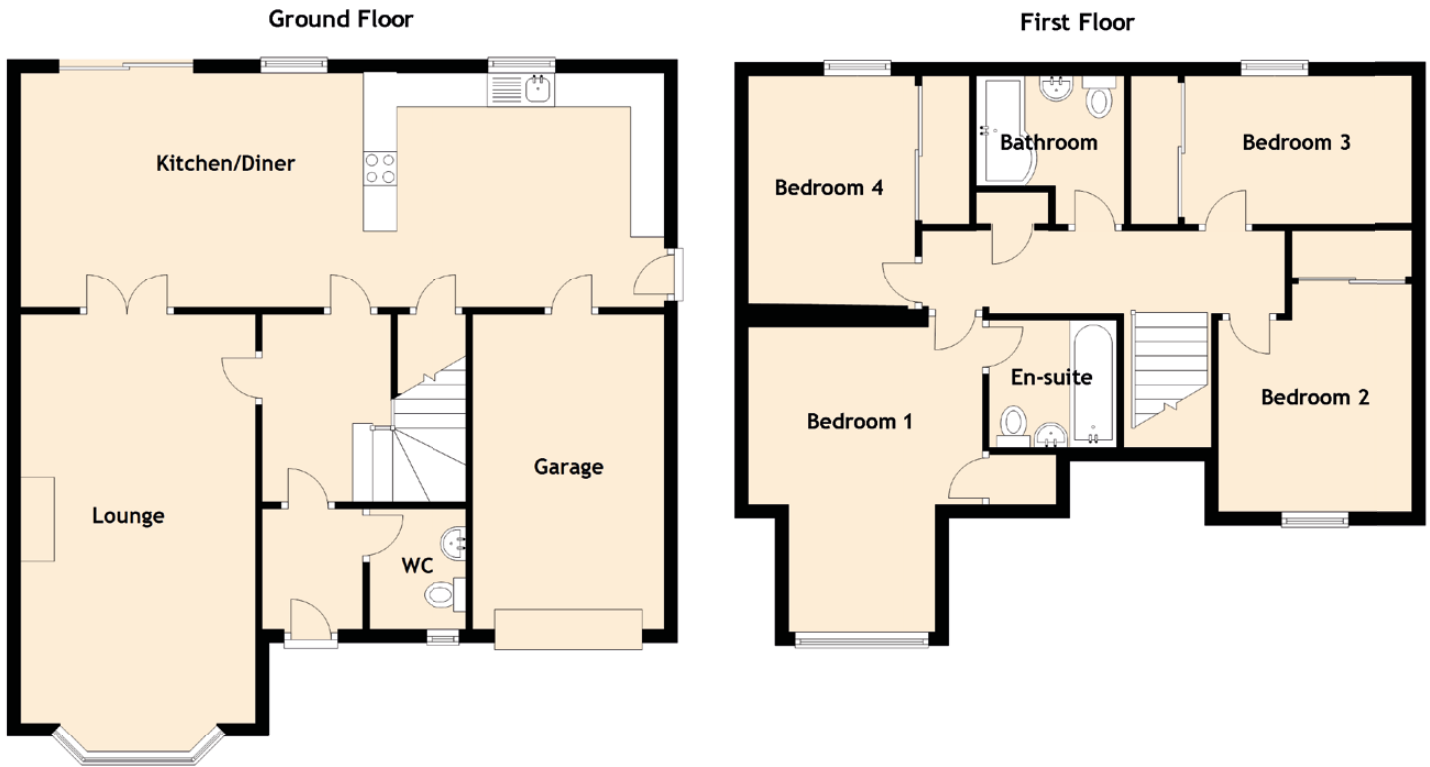


# 11 Kirkton Park

DAVIOT, INVERURIE, ABERDEENSHIRE, AB51 0HW



Approximate Dimensions (Taken from the widest point)

## Ground Floor

Lounge	6.10m (20') x 3.50m (11'6")
Kitchen/Diner	9.60m (31'6") x 3.50m (11'6")
WC	1.80m (5'11") x 1.50m (4'11")
Garage	4.70m (15'5") x 2.85m (9'4")

## First Floor

Bedroom 1	4.80m (15'9") x 3.50m (11'6")
En-suite	1.90m (6'3") x 1.90m (6'3")
Bedroom 2	3.40m (11'2") x 2.90m (9'6")
Bedroom 3	3.40m (11'2") x 2.30m (7'7")
Bedroom 4	3.50m (11'6") x 2.50m (8'2")
Bathroom	2.20m (7'3") x 2.20m (7'3")

Gross internal floor area (m<sup>2</sup>): 136m<sup>2</sup>