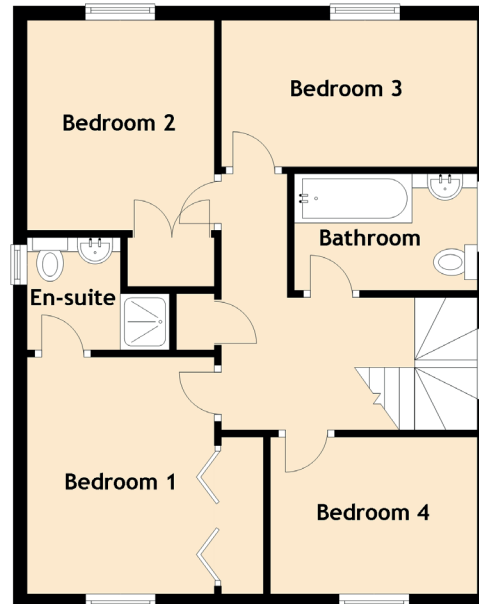
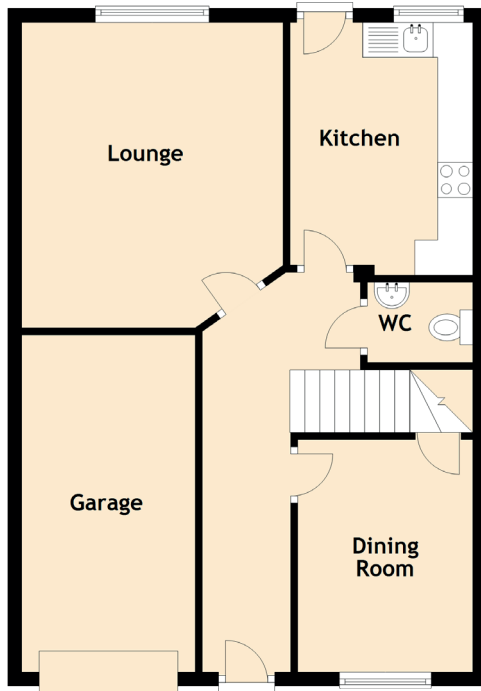


# 21 Chuckethall Place

LIVINGSTON, EH54 8AN



Approximate Dimensions (Taken from the widest point)

Lounge	4.35m (14'3") x 3.72m (12'2")
Kitchen	3.60m (11'10") x 2.60m (8'6")
Dining Room	3.31m (10'10") x 2.49m (8'2")
Bedroom 1	3.37m (11'1") x 2.67m (8'9")
En-suite	2.03m (6'8") x 1.60m (5'3")
Bedroom 2	4.08m (13'5") x 2.67m (8'9")
Bedroom 3	3.65m (12') x 2.09m (6'10")
Bedroom 4	2.95m (9'8") x 2.23m (7'4")
Bathroom	2.61m (8'7") x 1.66m (5'5")
WC	1.50m (4'11") x 1.00m (3'3")
Garage	4.80m (15'9") x 2.47m (8'1")