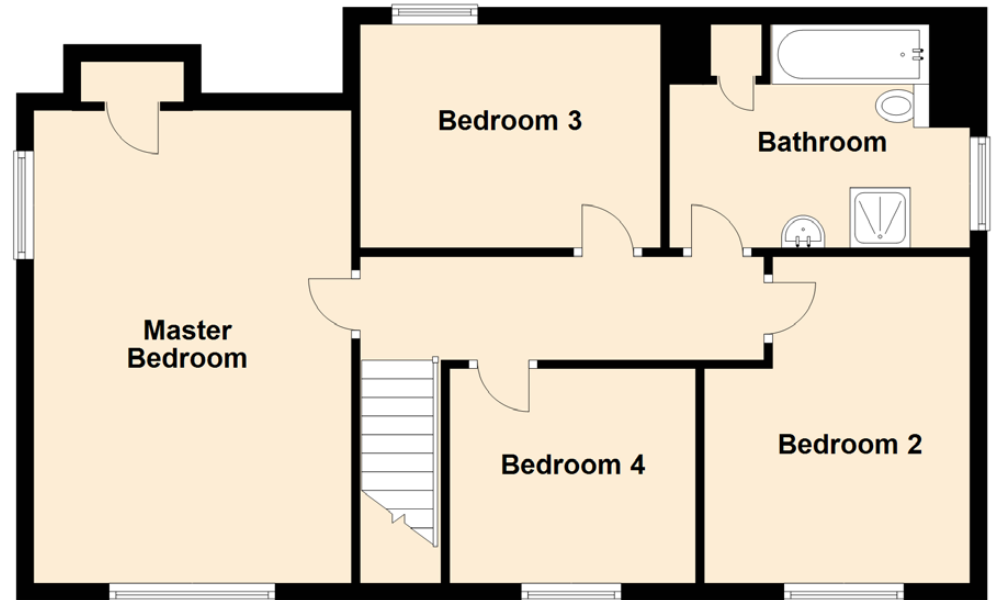
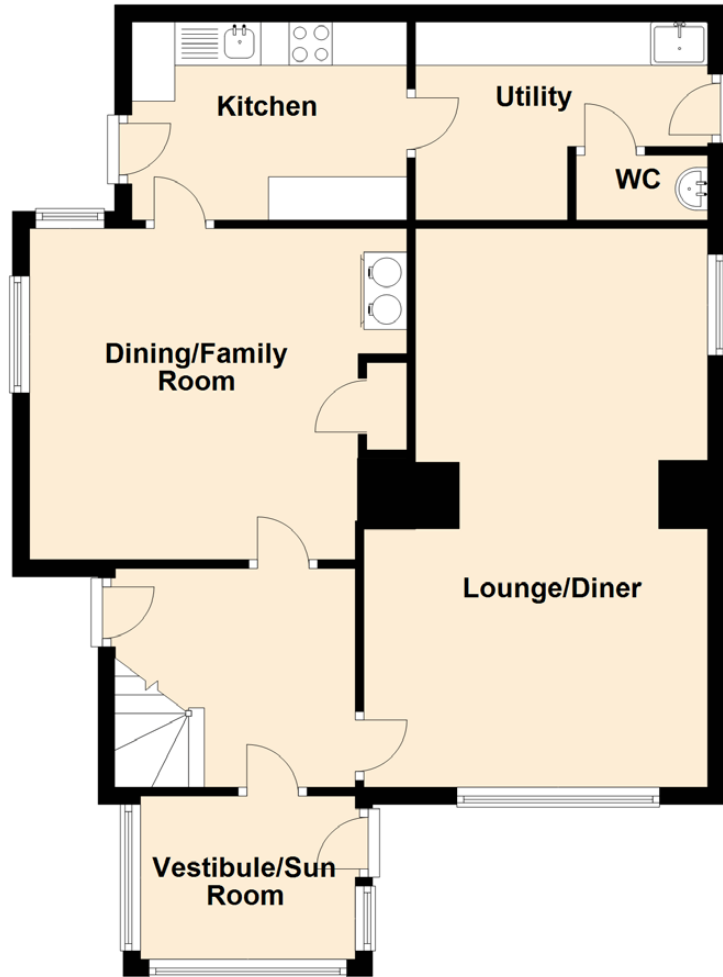


Claveron



Approximate Dimensions
(Taken from the widest point)

Vestibule/Sun Room	2.50m (8'2") x 1.90m (6'3")
Lounge/Diner	6.50m (21'4") x 4.00m (13'1")
Dining/Family Room	3.80m (12'6") x 3.40m (11'2")
Kitchen	3.20m (10'6") x 2.30m (7'7")
Utility	3.40m (11'2") x 2.30m (7'7")
Master Bedroom	5.50m (18'1") x 3.70m (12'2")
Bedroom 2	3.80m (12'6") x 3.00m (9'10")
Bedroom 3	3.50m (11'6") x 2.30m (7'7")
Bedroom 4	2.80m (9'2") x 2.50m (8'2")
Bathroom	3.50m (11'6") x 2.60m (8'6")

Gross internal floor area (m²): 157m²

EPC Rating: G

Approximate Dimensions
(Taken from the widest point)

Garden Flat

Living Zone	3.53m (11'7") x 3.50m (11'6")
Bathroom	2.70m (8'10") x 2.10m (6'11")
Kitchen	2.00m (6'7") x 1.50m (4'11")

