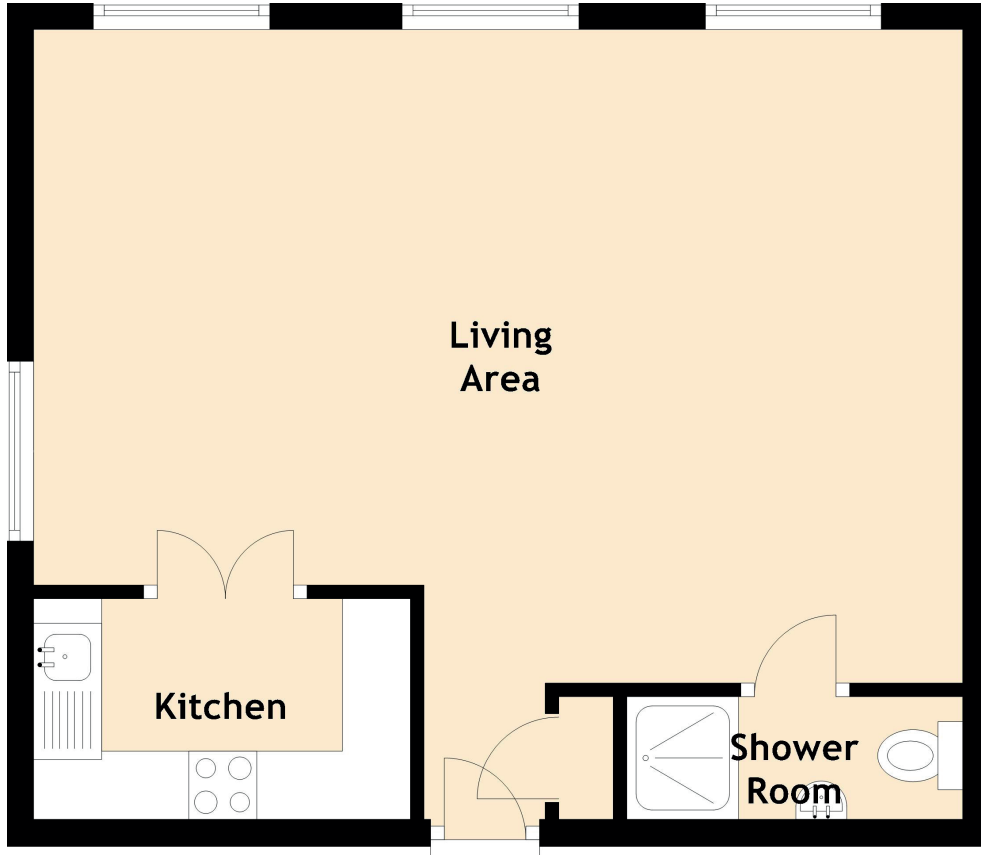


1/2 Peel Terrace

NEWINGTON, EDINBURGH, EH9 2AY



Approximate Dimensions
(Taken from the widest point)

Living Area	6.83m (22'5") x 4.80m (15'9")
Kitchen	2.77m (9'1") x 1.54m (5'1")
Shower Room	2.70m (8'10") x 0.90m (2'11")