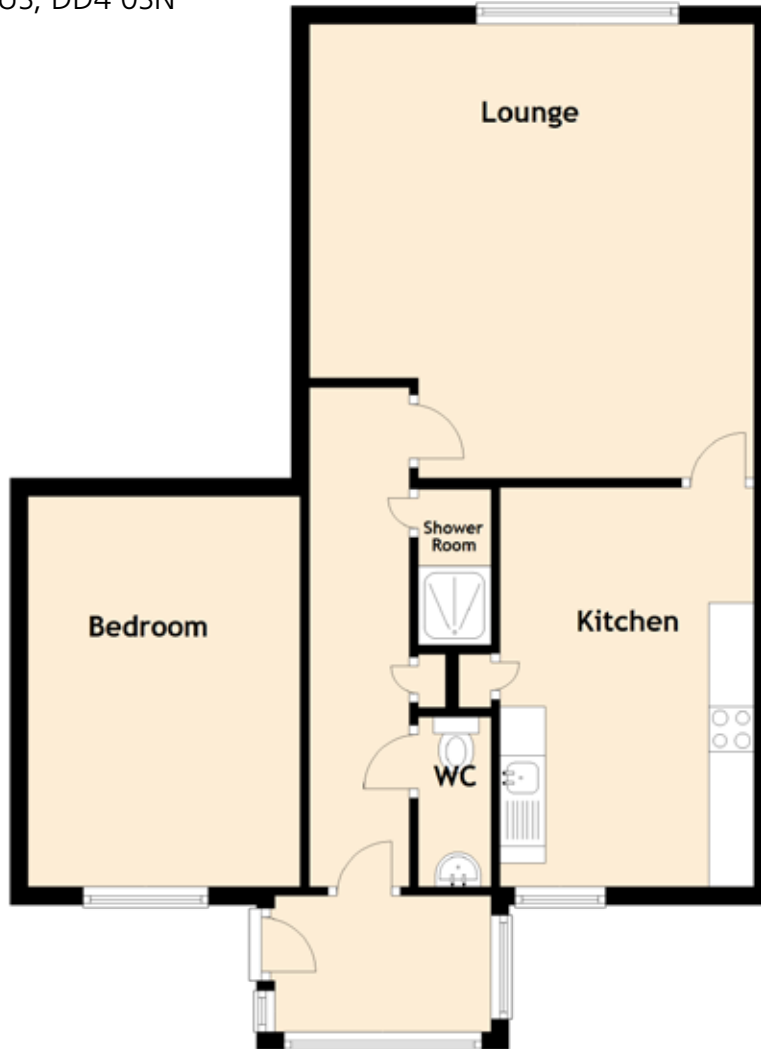


16 Westhall Terrace

MURROES, ANGUS, DD4 0SN



Approximate Dimensions (Taken from the widest point)

Lounge	5.00m (16'5") x 4.90m (16'1")
Kitchen	4.40m (14'5") x 2.80m (9'2")
Bedroom	4.30m (14'1") x 3.00m (9'10")
Shower Room	1.74m (5'8") x 0.90m (2'11")
WC	1.80m (5'11") x 0.80m (2'7")