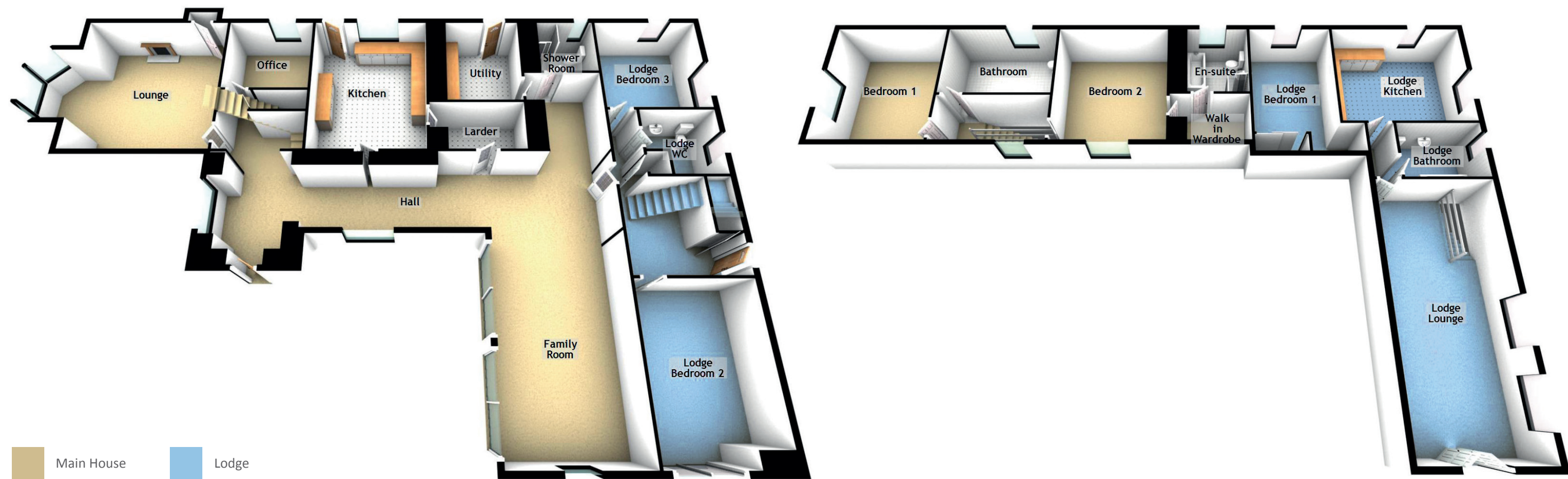


SPECIFICATIONS & DETAILS



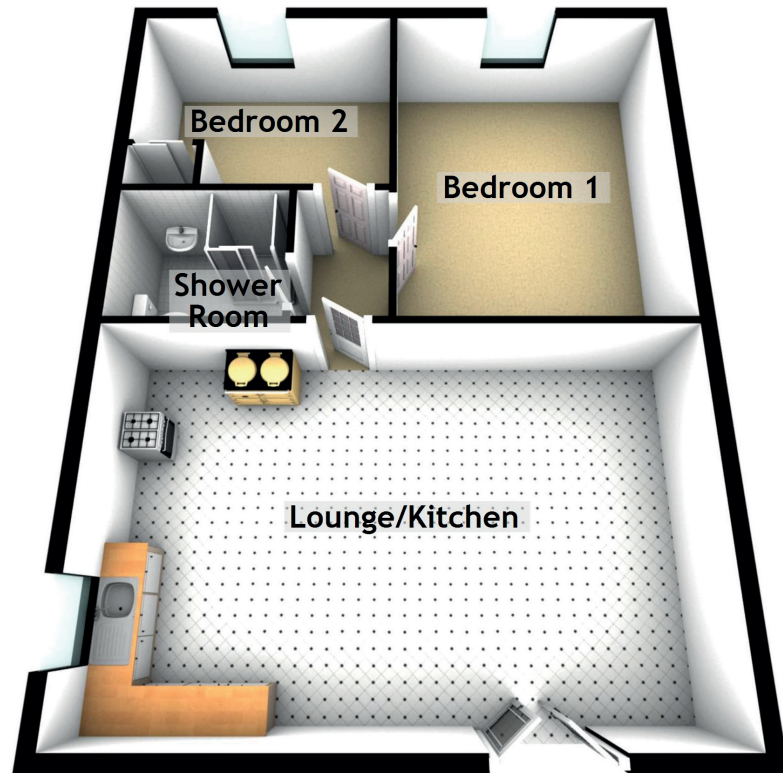
Approximate Dimensions (Taken from the widest point)

Lounge	6.44m (21'2") x 5.20m (17'1")
Office	3.00m (9'10") x 2.80m (9'2")
Kitchen	5.20m (17'1") x 4.00m (13'1")
Utility	3.30m (10'10") x 2.60m (8'6")
Larder	2.60m (8'6") x 1.82m (6')
Shower Room	2.10m (6'11") x 2.00m (6'7")
Sun Room	6.75m (22'2") x 4.07m (13'4")
Bedroom 1	4.40m (14'5") x 4.00m (13'1")
Bedroom 2	4.40m (14'5") x 4.00m (13'1")
En-suite	2.76m (9'1") x 2.20m (7'3")
Bathroom	4.00m (13'1") x 2.74m (9')
Lodge Lounge	7.88m (25'10") x 4.00m (13'1")
Lodge Kitchen	4.90m (16'1") x 4.04m (13'3")
Lodge Bedroom 1	5.14m (16'10") x 4.60m (15'1")
Lodge Bedroom 2	5.21m (17'1") x 3.62m (11'10")
Lodge Bedroom 3	3.62m (11'10") x 3.60m (11'10")
Lodge Bathroom	2.77m (9'1") x 1.91m (6'3")
Lodge WC	2.55m (8'4") x 2.42m (7'11")

Gross internal floor area (m²): TBCm² | EPC Rating: TBC

Extras (Included in the sale): Fixtures and fittings and integrated appliances are included where applicable, some farm machinery is available by separate negotiation.

SPECIFICATIONS & DETAILS



Approximate Dimensions
(Taken from the widest point)

Lounge/Kitchen	7.30m (23'11") x 4.70m (15'5")
Bedroom 1	4.70m (15'5") x 3.50m (11'6")
Bedroom 2	3.50m (11'6") x 2.80m (9'2")
Shower Room	2.20m (7'3") x 1.80m (5'11")

Gross internal floor area (m²): TBCm²

EPC Rating: TBC

Extras (Included in the sale): Fixtures and fittings and integrated appliances are included where applicable, some farm machinery is available by separate negotiation.