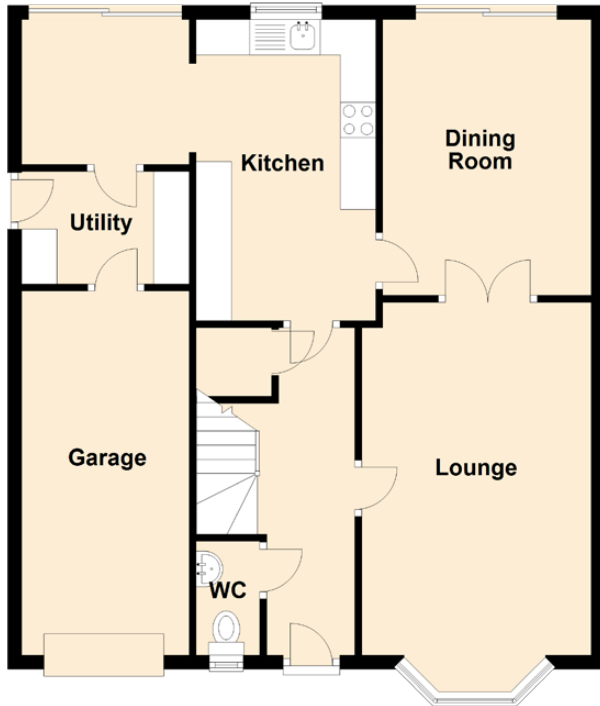


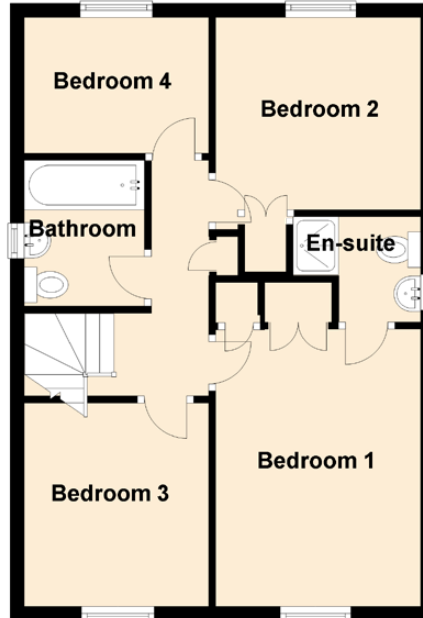
14 Braemore Drive

DUNFERMLINE, KY11 8ES

Ground Floor



First Floor



Approximate Dimensions
(Taken from the widest point)

Ground Floor

Lounge	4.99m (16'4") x 3.59m (11'9")
Kitchen	4.26m (14') x 2.54m (8'4")
Dining Room	3.90m (12'10") x 2.95m (9'8")
Utility	2.45m (8') x 1.59m (5'3")
WC	1.61m (5'3") x 0.90m (2'11")

First Floor

Bedroom 1	3.92m (12'10") x 2.90m (9'6")
En-suite	2.24m (7'4") x 1.49m (4'11")
Bedroom 2	2.90m (9'6") x 2.72m (8'11")
Bedroom 3	3.02m (9'11") x 2.61m (8'7")
Bedroom 4	2.61m (8'7") x 2.13m (7')
Bathroom	2.06m (6'9") x 1.70m (5'7")

Gross internal floor area (m²) - 113m²

EPC Rating - C

Extras (Included in the sale): Floor coverings, light fittings, blinds and window dressings.

