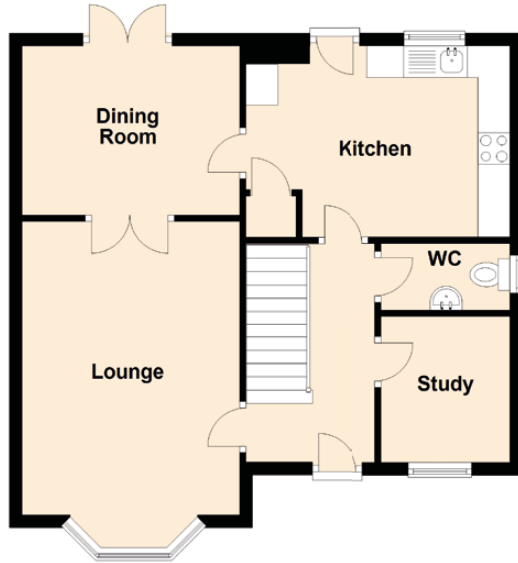


# 7 Waverley Court

PRESTONPANS, EAST LOTHIAN, EH32 9GG



Approximate Dimensions  
(Taken from the widest point)

Lounge	4.63m (15'2") x 3.42m (11'3")
Dining Room	3.42m (11'3") x 2.66m (8'9")
Kitchen	4.16m (13'8") x 3.01m (9'11")
WC	2.02m (6'8") x 1.05m (3'5")
Study	2.30m (7'7") x 2.24m (7'4")
Bedroom 1	3.47m (11'5") x 2.85m (9'4")
Bedroom 2	3.19m (10'6") x 3.03m (9'11")
Bedroom 3	2.69m (8'10") x 2.63m (8'8")
Bedroom 4	3.31m (10'10") x 2.69m (8'10")
Bathroom	2.20m (7'3") x 1.71m (5'7")
En-suite	1.69m (5'7") x 1.55m (5'1")