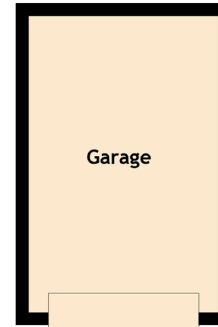
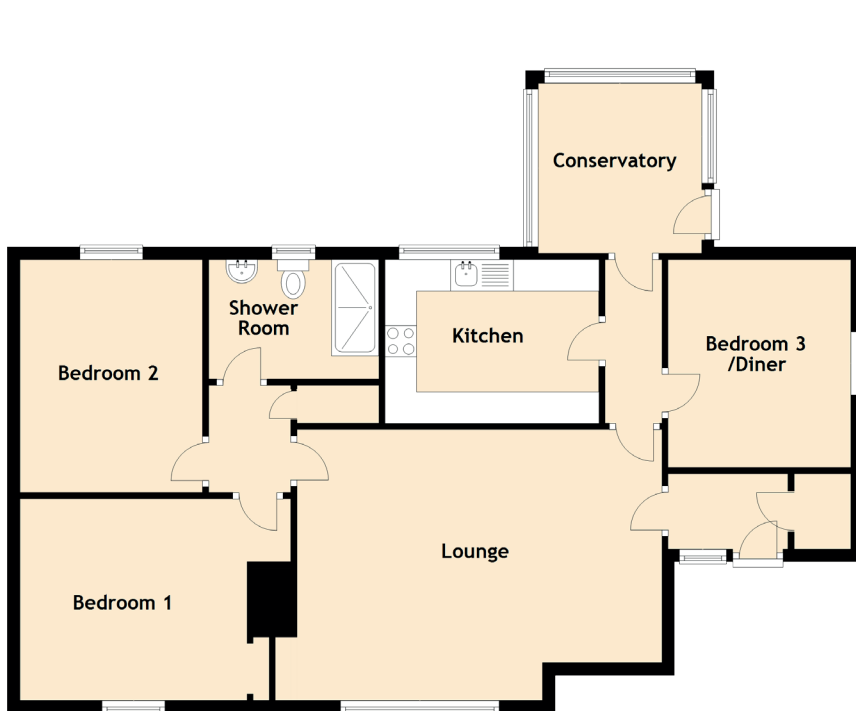


Greenlaw

BRIGHTON ROAD, CUPAR, KY15 5DH



Approximate Dimensions
(Taken from the widest point)

Lounge	5.80m (19') x 4.30m (14'1")
Kitchen	3.40m (11'2") x 2.60m (8'6")
Conservatory	2.70m (8'10") x 2.60m (8'6")
Bedroom 1	4.30m (14'1") x 3.20m (10'6")
Bedroom 2	3.70m (12'2") x 2.90m (9'6")
Bedroom 3/Diner	3.30m (10'10") x 2.90m (9'6")
Shower Room	2.70m (8'10") x 1.90m (6'3")
Garage	4.70m (15'5") x 3.00m (9'10")