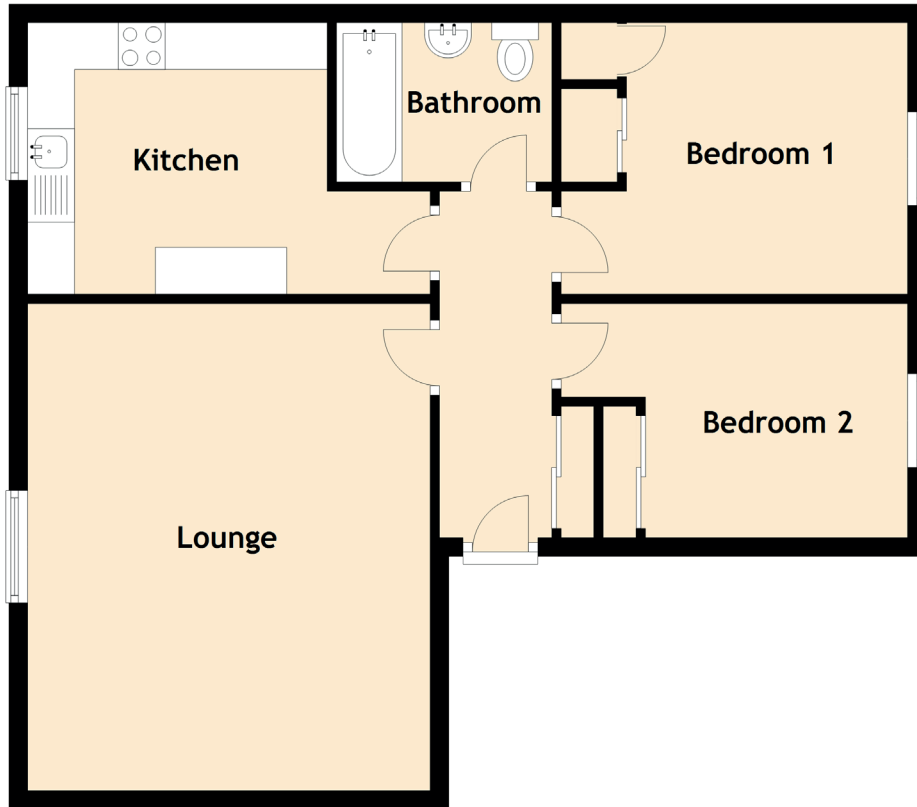


12 Margaret Place

ABERDEEN, AB10 7GB



Approximate Dimensions (Taken from the widest point)

| | |
|-----------|-------------------------------|
| Lounge | 5.20m (17'1") x 4.10m (13'5") |
| Kitchen | 4.30m (14'1") x 2.90m (9'6") |
| Bedroom 1 | 3.70m (12'2") x 2.90m (9'6") |
| Bedroom 2 | 3.70m (12'2") x 2.50m (8'2") |
| Bathroom | 2.30m (7'7") x 1.70m (5'7") |