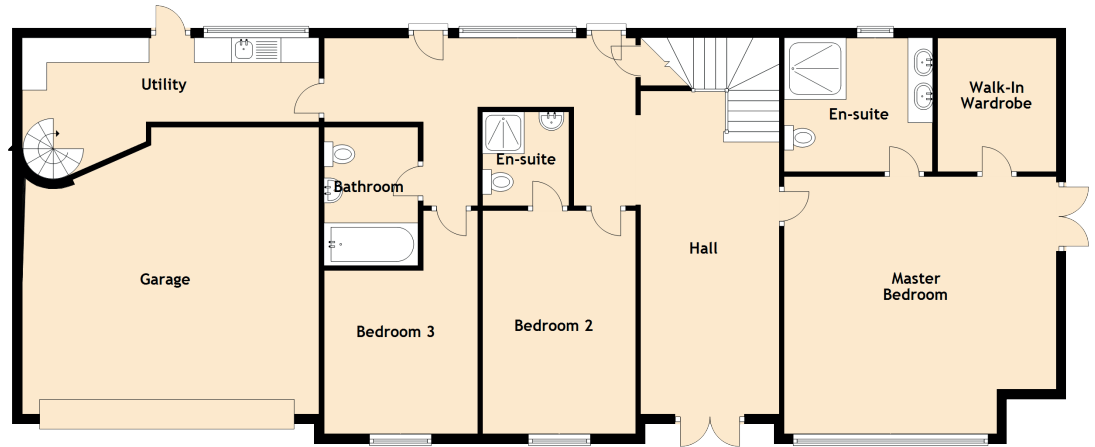


Kintail

LINNS ROAD, TORTHORWALD, DUMFRIES, DG1 3PU



Approximate Dimensions (Taken from the widest point)

Ground Floor

Master Bedroom	5.40m (17'9") x 5.20m (17'1")
En-suite	3.00m (9'10") x 2.70m (8'10")
Walk-In Wardrobe	2.70m (8'10") x 2.40m (7'10")
Bedroom 2	4.50m (14'9") x 3.10m (10'2")
En-suite	1.90m (6'3") x 1.75m (5'9")
Bedroom 3	3.30m (10'10") x 3.10m (10'2")
Bathroom	2.80m (9'2") x 1.90m (6'3")
Utility	6.00m (19'8") x 1.60m (5'3")

First Floor

Lounge	7.10m (23'4") x 7.09m (23'3")
Kitchen	5.40m (17'9") x 6.30m (20'8")
Family Room	5.50m (18'1") x 5.00m (16'5")

