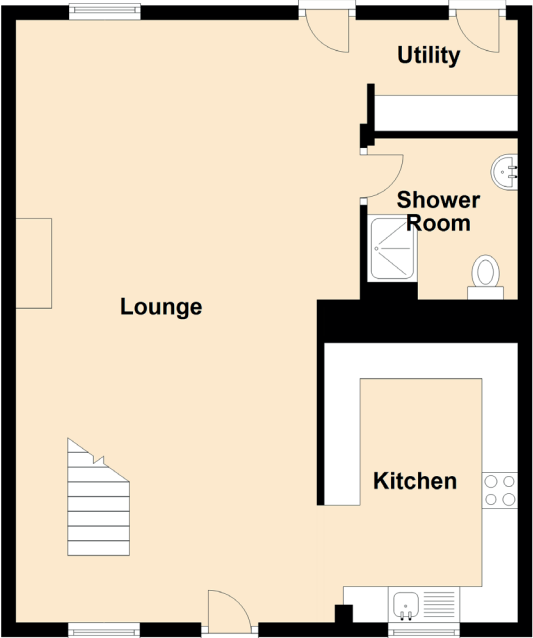


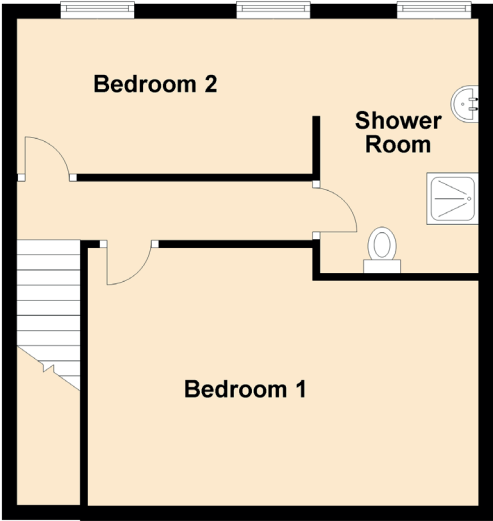
# 142a High Street

LESLIE, FIFE, KY6 3DB

Ground Floor



First Floor



Approximate Dimensions (Taken from the widest point)

Lounge	8.40m (27'7") x 4.80m (15'9")
Kitchen	3.90m (12'10") x 2.70m (8'10")
Utility	2.00m (6'7") x 1.55m (5'1")
Shower Room	2.25m (7'5") x 2.10m (6'11")
Upper Shower Room	3.45m (11'4") x 2.15m (7'1")