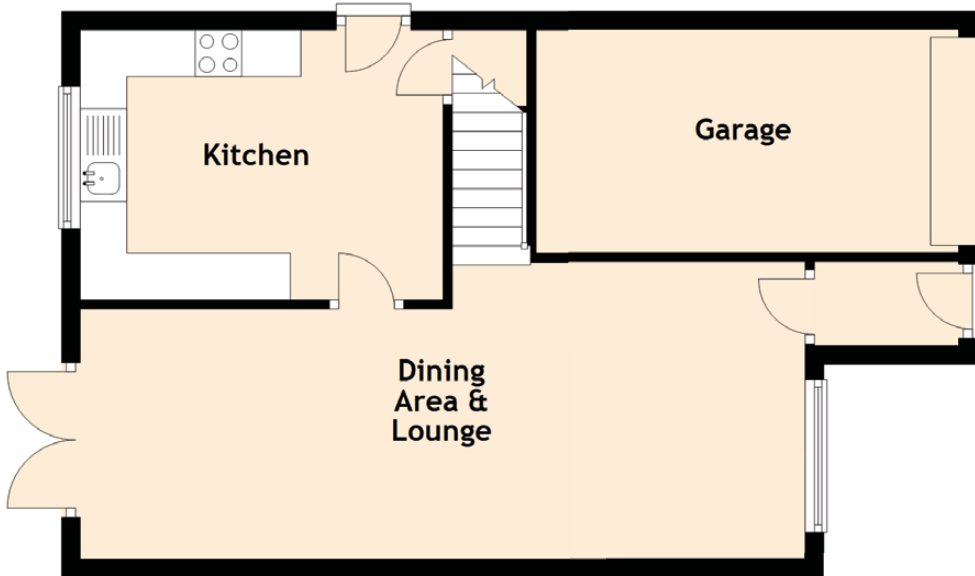


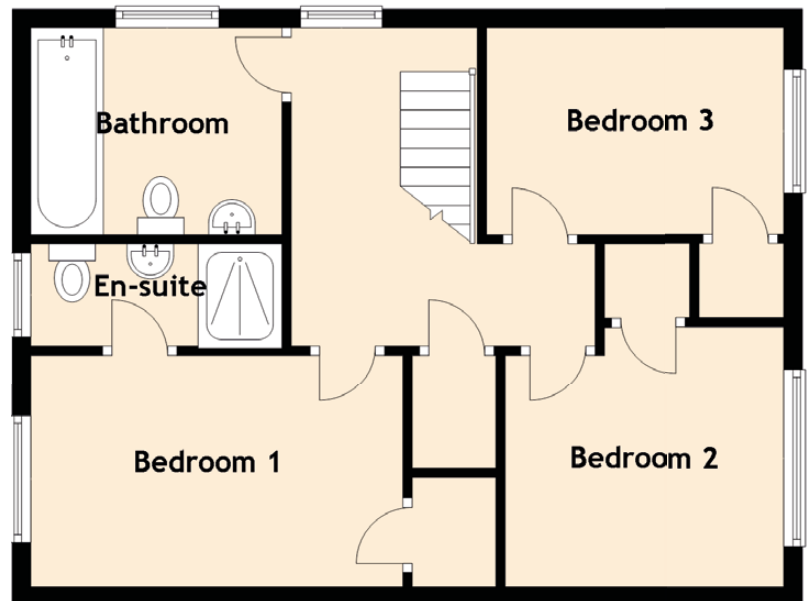
# 1 Shaw Crescent

NETHERTON, WISHAW, NORTH LANARKSHIRE, ML2 0BF

## Ground Floor



## First Floor



Approximate Dimensions (Taken from the widest point)

Dining Area & Lounge	7.80m (25'7") x 2.70m (8'10")
Kitchen	3.90m (12'10") x 2.90m (9'6")
Bedroom 1	4.00m (13'1") x 2.90m (9'6")
En-suite	2.70m (8'10") x 1.10m (3'7")
Bedroom 2	3.00m (9'10") x 2.40m (7'10")
Bedroom 3	3.20m (10'6") x 2.50m (8'2")
Bathroom	2.70m (8'10") x 1.90m (6'3")

Gross internal floor area (m<sup>2</sup>): 82m<sup>2</sup>