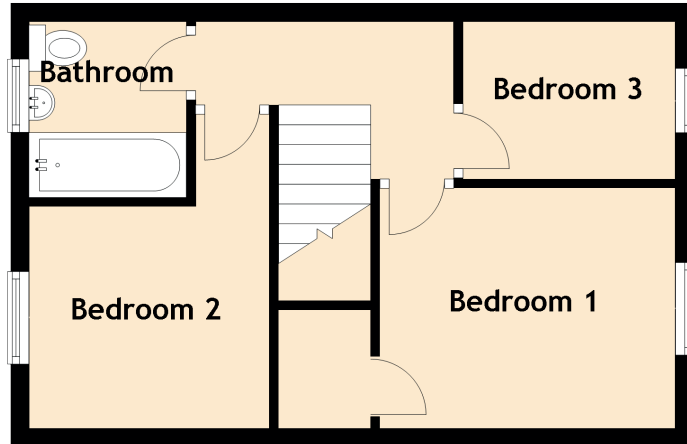
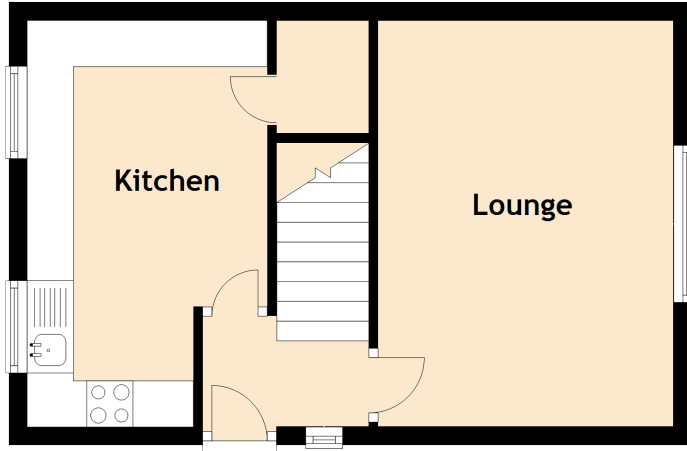


36 Tremayne Place

DUNFERMLINE, KY12 9YH



Approximate Dimensions (Taken from the widest point)

Lounge	4.40m (14'5") x 3.20m (10'6")
Kitchen	4.40m (14'5") max x 2.60m (8'6")
Bedroom 1	3.20m (10'6") x 2.60m (8'6")
Bedroom 3	2.30m (7'7") x 1.70m (5'7")
Bathroom	1.90m (6'3") x 1.70m (5'7")
Bedroom 2	3.40m (11'2") x 2.60m (8'6")