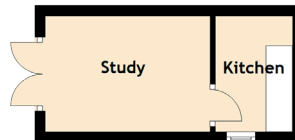
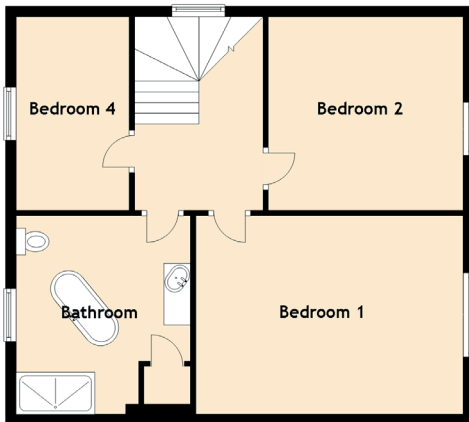
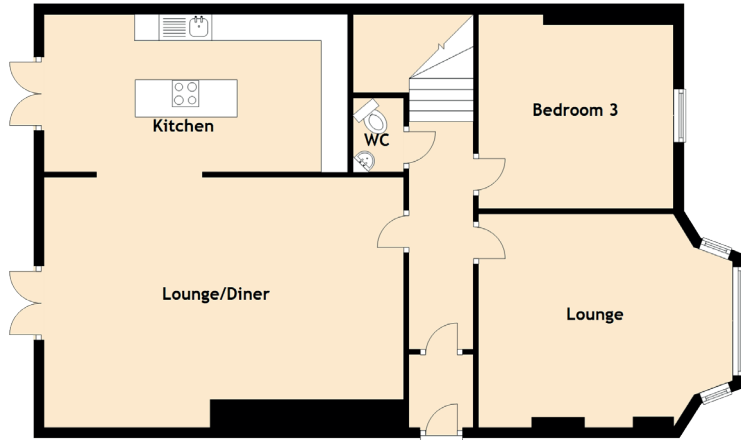


Cawburn Villa

BROXBURN, WEST LOTHIAN, EH52 5PQ



Approximate Dimensions (Taken from the widest point)

Ground Floor

Lounge	4.81m (15'9") x 4.04m (13'3")
Lounge/Diner	6.81m (22'4") x 4.73m (15'6")
Kitchen	5.75m (18'10") x 3.25m (10'8")
Bedroom 3	3.69m (12'1") x 3.68m (12'1")
WC	1.40m (4'7") x 0.89m (2'11")

First Floor

Bedroom 1	5.07m (16'8") x 3.75m (12'4")
Bedroom 2	3.69m (12'1") x 3.66m (12')
Bedroom 4	4.04m (13'3") x 2.24m (7'4")
Bathroom	4.01m (13'2") x 3.30m (10'10")

External Study

Study	3.11m (10'3") x 2.19m (7'2")
Kitchen	2.19m (7'2") x 1.46m (4'9")