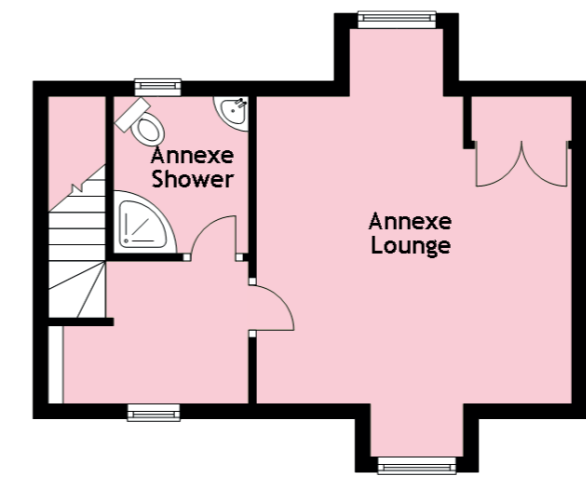
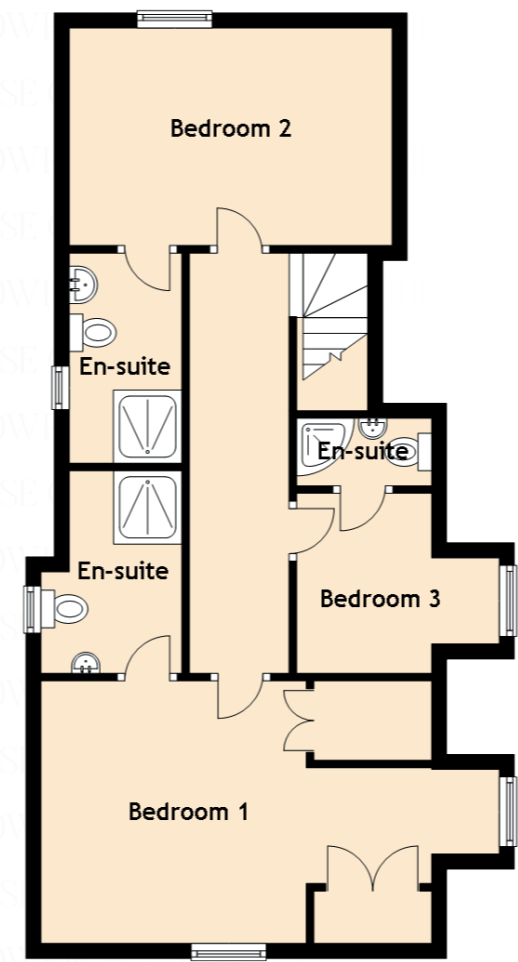
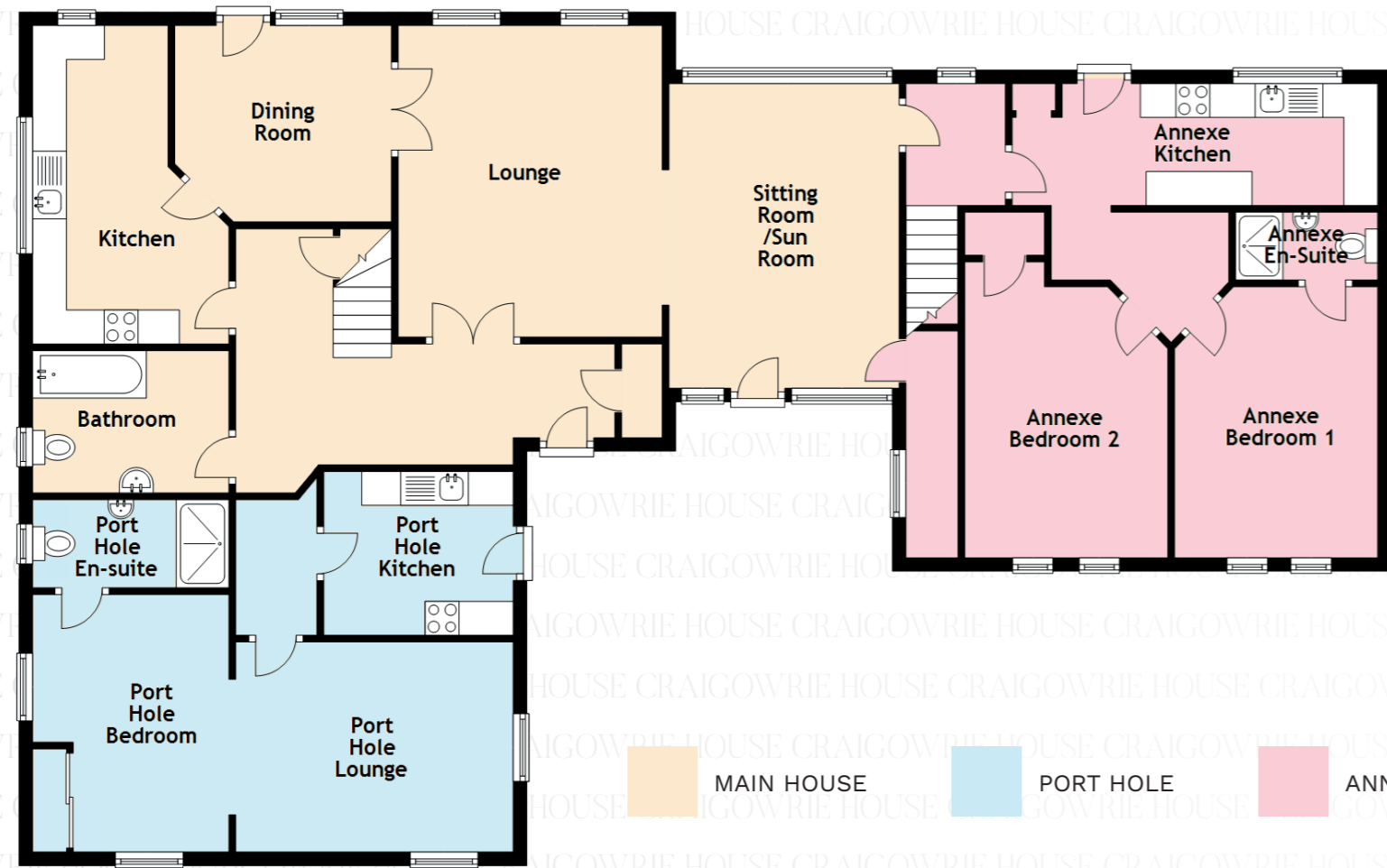


CRAIGOWRIE HOUSE

CRAIGOWRIE HOUSE



Approximate Dimensions (Taken from the widest point)

Lounge	4.60m (15'1") x 3.90m (12'10")
Sitting Room/Sun Room	4.50m (14'9") x 3.40m (11'2")
Dining Room	3.20m (10'6") x 2.90m (9'6")
Kitchen	4.70m (15'5") x 2.00m (6'7")
Bathroom	2.90m (9'6") x 2.10m (6'11")
Bedroom 1	5.20m (17'1") x 3.40m (11'2")
En-suite	2.70m (8'10") x 1.88m (6'2")
Bedroom 2	4.30m (14'1") x 2.90m (9'6")
En-suite	2.80m (9'2") x 1.50m (4'11")
Bedroom 3	2.70m (8'10") x 2.40m (7'10")
En-suite	1.80m (5'11") x 0.90m (2'11")
Port Hole Lounge	4.10m (13'5") x 3.10m (10'2")
Port Hole Kitchen	2.80m (9'2") x 2.30m (7'7")
Port Hole Bedroom	3.80m (12'6") x 3.00m (9'10")
Port Hole En-suite	2.90m (9'6") x 1.30m (4'3")
Annexe Lounge	5.70m (18'8") x 4.20m (13'9")
Annexe Kitchen	5.40m (17'9") x 1.80m (5'11")
Annexe Bedroom 1	4.00m (13'1") x 3.00m (9'10")
Annexe En-Suite	2.10m (6'11") x 1.00m (3'3")
Annexe Bedroom 2	4.50m (14'9") x 3.00m (9'10")
Annexe Shower	2.30m (7'7") x 1.90m (6'3")

Gross internal floor area (m<sup>2</sup>): 240m<sup>2</sup> | EPC Rating: C

Extras (Included in the sale): Garden storage shed, Cabin/conservatory and where applicable all fixed floor coverings and blinds. Additional items of furniture are available by separate negotiation. No warranties are given or implied for the garage conversion.