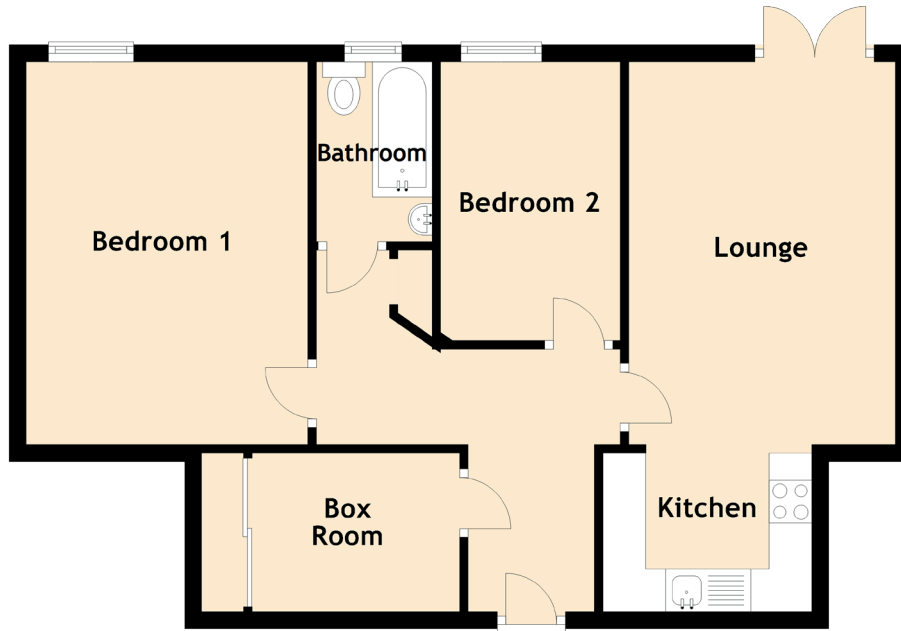


# Specifications & Details

FLOOR PLAN, DIMENSIONS & MAP



Approximate Dimensions (Taken from the widest point)

Lounge	4.49m (14'9") x 3.13m (10'3")
Kitchen	2.45m (8') x 1.86m (6'1")
Bedroom 1	4.48m (14'8") x 3.31m (10'10")
Bedroom 2	3.29m (10'10") x 2.11m (6'11")
Box Room	3.03m (9'11") x 1.83m (6')
Bathroom	2.11m (6'11") x 1.36m (4'6")

Gross internal floor area (m<sup>2</sup>): 62m<sup>2</sup> | EPC Rating: C

Extras (Included in the sale): All curtains and poles, built-in electric oven and hob, integral fridge and washing machine, separate freezer.

