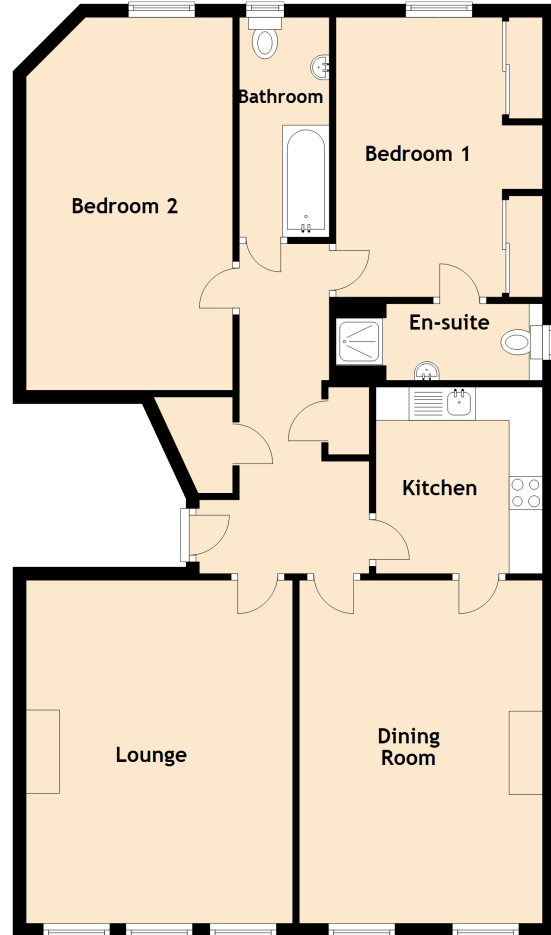


Specifications & details

FLOOR PLAN, DIMENSIONS & MAP



Approximate Dimensions (Taken from the widest point)

Lounge	5.15m (16'11") x 4.00m (13'1")
Kitchen	2.80m (9'2") x 2.50m (8'2")
Dining Room	5.15m (16'11") x 3.65m (12')
Bedroom 1	4.20m (13'9") x 3.10m (10'2")
En-Suite	3.10m (10'2") x 1.15m (3'9")
Bedroom 2	5.60m (18'4") x 2.65m (8'8")
Bathroom	3.30m (10'10") x 1.35m (4'5")

Gross internal floor area (m²): 96m² | EPC Rating: C

