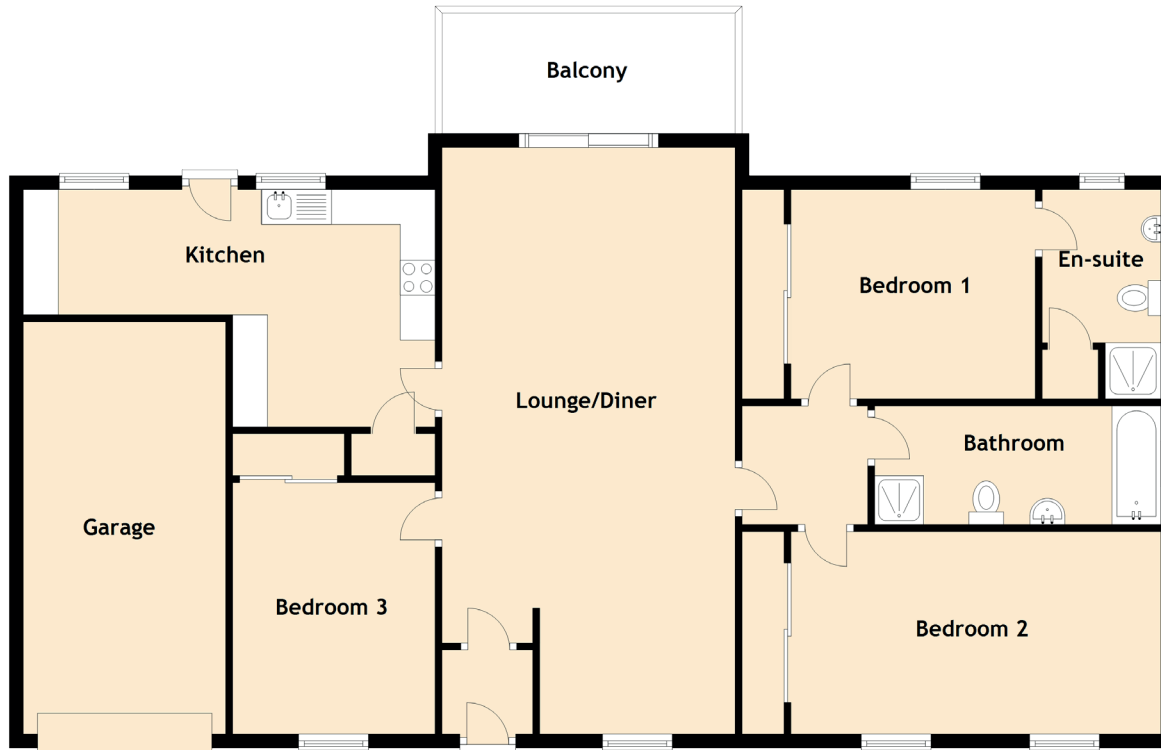


# 2D Braehead Road

LETHAM, FORFAR, DD8 2PG



Approximate Dimensions  
(Taken from the widest point)

Lounge/Diner	8.40m (27'7") x 4.20m (13'9")
Balcony	4.20m (13'9") x 1.83m (6')
Kitchen	5.90m (19'4") x 3.40m (11'2")
Bedroom 1	3.50m (11'6") x 3.00m (9'10")
En-suite	3.00m (9'10") x 1.70m (5'7")
Bedroom 2	5.30m (17'5") x 2.90m (9'6")
Bedroom 3	3.60m (11'10") x 2.90m (9'6")
Bathroom	4.10m (13'5") x 1.70m (5'7")
Garage	5.90m (19'4") x 2.90m (9'6")