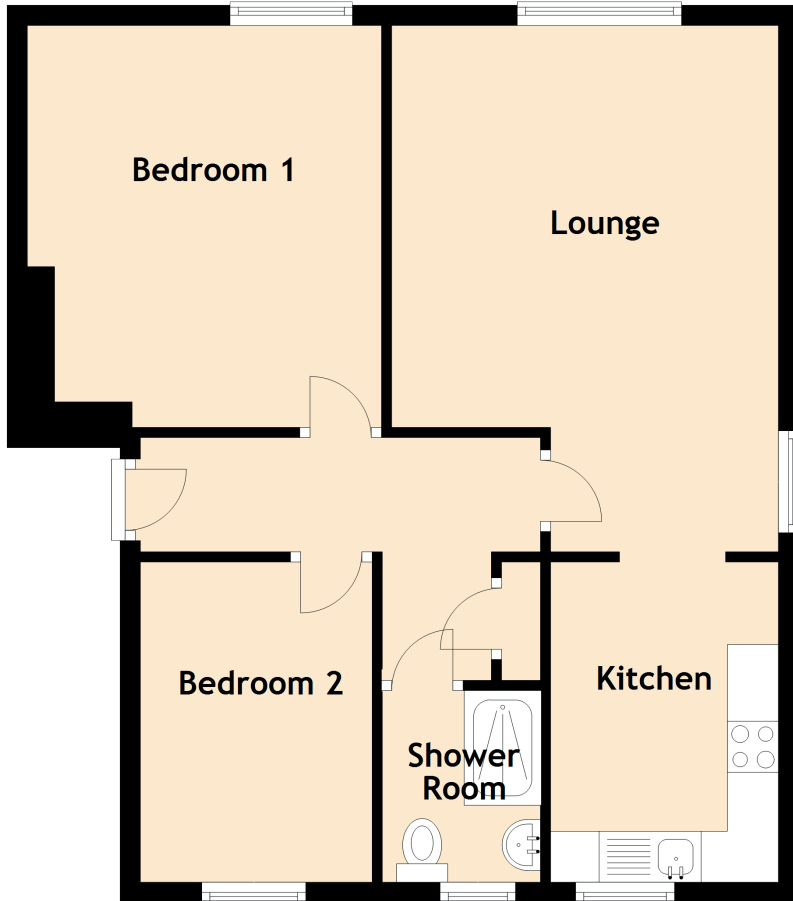


27/3 Royston Mains Crescent

GRANTON, EDINBURGH, EH5 1LJ



Approximate Dimensions
(Taken from the widest point)

Lounge	5.16m (16'11") x 3.79m (12'5")
Kitchen	3.14m (10'4") x 1.88m (6'2")
Bedroom 1	3.94m (12'11") x 3.47m (11'5")
Bedroom 2	3.22m (10'7") x 2.43m (8')
Shower Room	1.88m (6'2") x 1.39m (4'7")