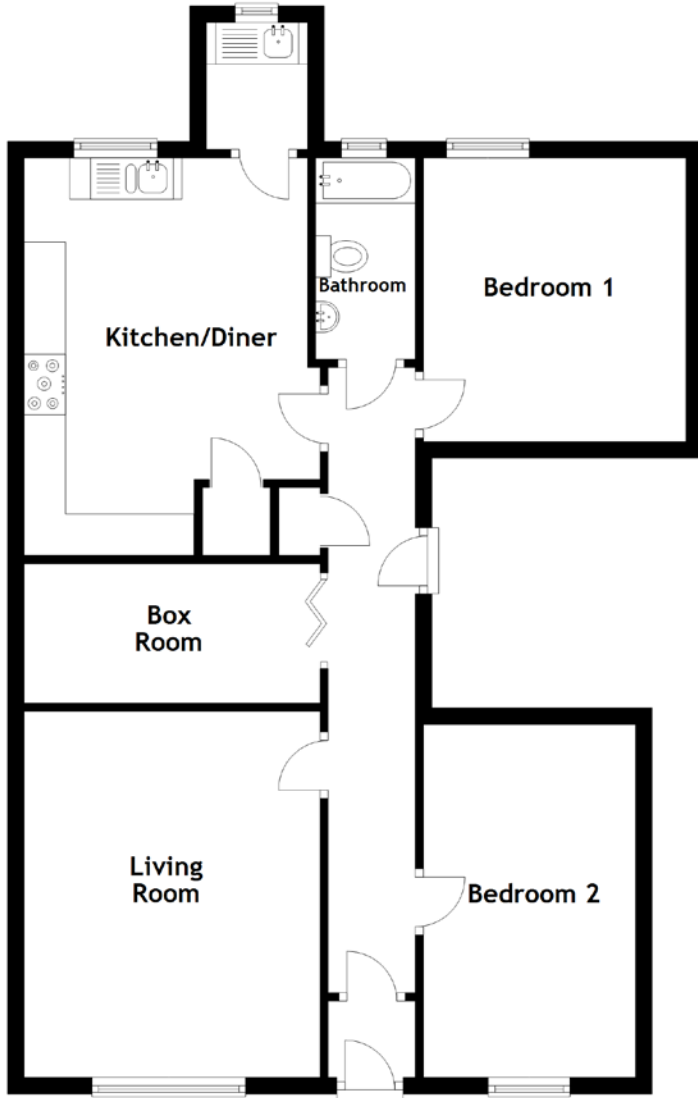


FLOOR PLAN, DIMENSIONS & MAP



Approximate Dimensions
(Taken from the widest point)

Living Room	4.42m (14'6") x 3.57m (11'9")
Kitchen/Diner	4.80m (15'9") x 3.42m (11'3")
Bedroom 1	3.21m (10'6") x 3.17m (10'5")
Bedroom 2	4.26m (14') x 2.56m (8'5")
Box Room	3.57m (11'9") x 1.68m (5'6")
Bathroom	2.43m (8') x 1.20m (3'11")

Gross internal floor area (m²): 85m²

EPC Rating: D

