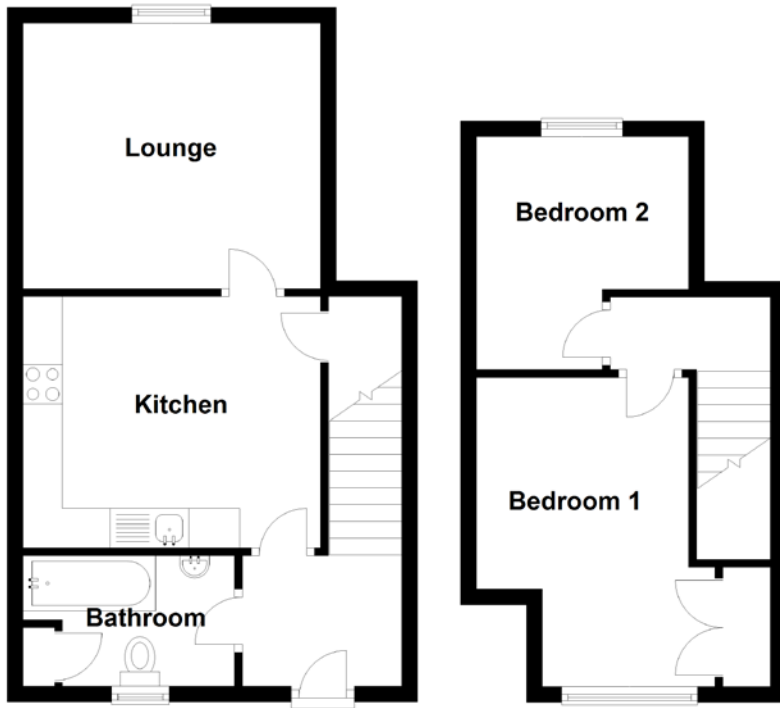


FLOOR PLAN, DIMENSIONS & MAP



Approximate Dimensions
(Taken from the widest point)

Kitchen	3.77m (12'4") x 3.18m (10'5")
Lounge	3.71m (12'2") x 3.36m (11')
Bathroom	2.68m (8'10") x 1.65m (5'5")
Bedroom 1	3.91m (12'10") x 2.68m (8'10")
Bedroom 2	2.95m (9'8") x 2.78m (9'1")

Gross internal floor area (m²): 70m²

EPC Rating: D

