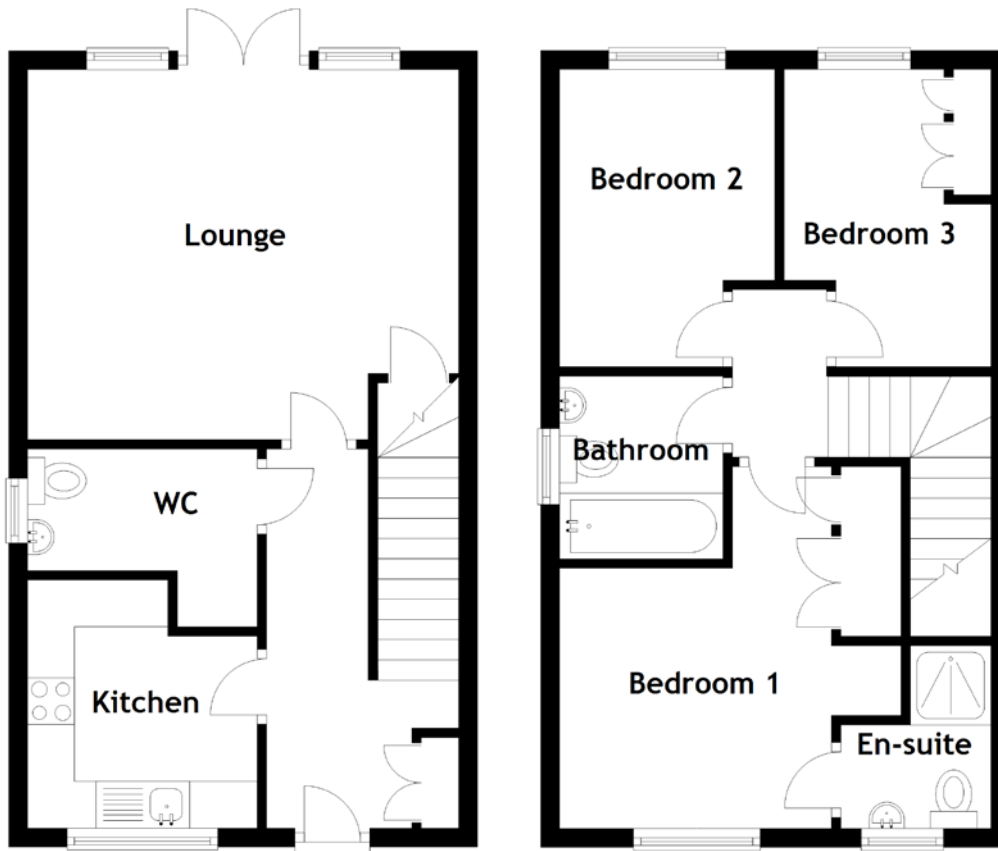


FLOOR PLAN, DIMENSIONS & MAP



Approximate Dimensions
(Taken from the widest point)

Lounge	4.60m (15'1") x 3.95m (13')
Kitchen	2.65m (8'8") x 2.45m (8')
WC	2.45m (8') x 1.90m (6'3")
Bedroom 1	2.90m (9'6") x 2.65m (8'8")
En-suite	1.95m (6'5") x 1.60m (5'3")
Bedroom 2	3.17m (10'5") x 2.29m (7'6")

Bedroom 3	3.30m (10'10") x 2.20m (7'3")
Bathroom	1.95m (6'5") x 1.75m (5'9")

Gross internal floor area (m²): 76m²
EPC Rating: C

Extras (Included in the sale): Carpets and floor coverings, light fixtures and fittings, curtains and blinds.

