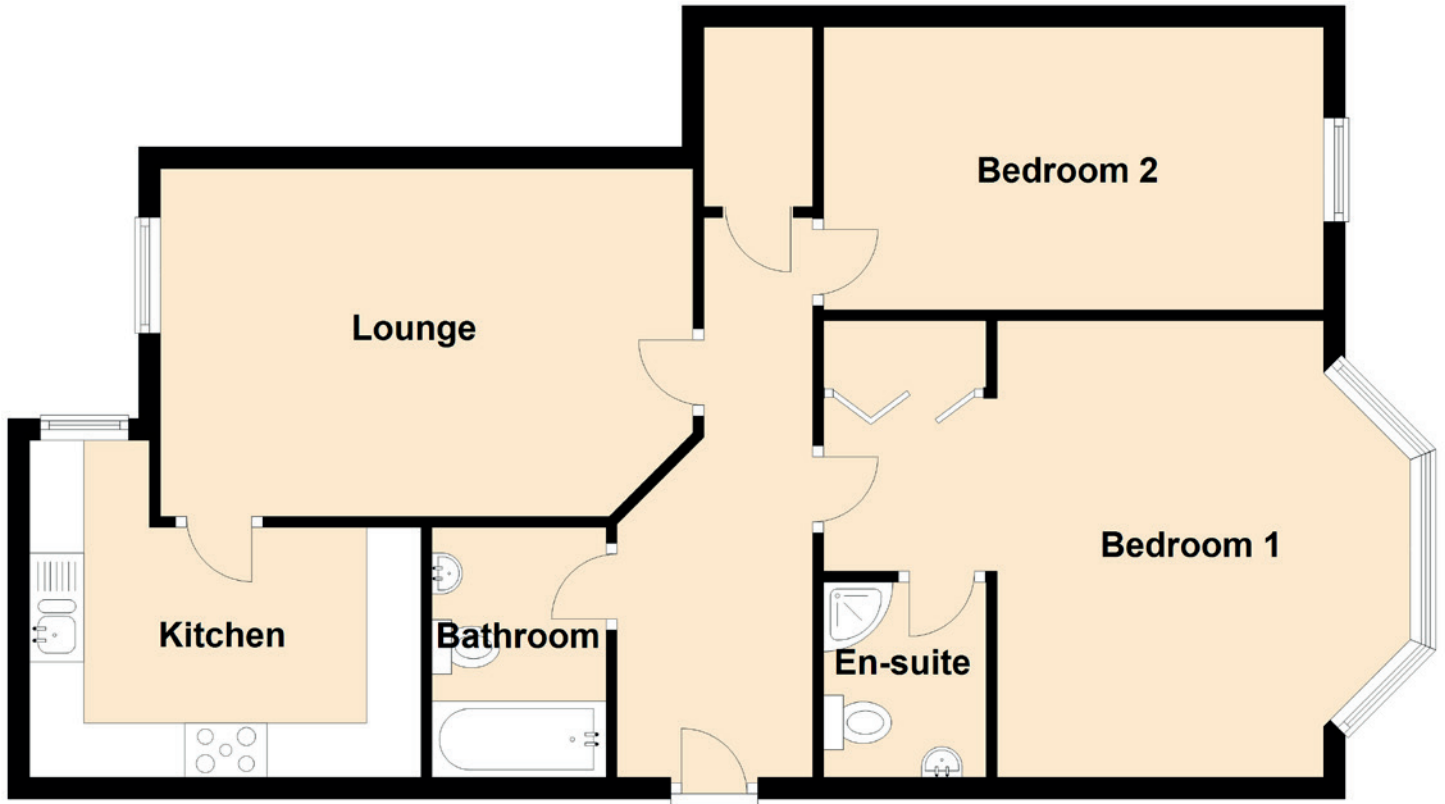


FLOOR PLAN, DIMENSIONS & MAP



Approximate Dimensions
(Taken from the widest point)

Lounge 4.51m (14'10") x 3.20m (10'6")
 Kitchen 3.60m (11'10") x 3.10m (10'2")
 Bedroom 1 5.40m (17'9") x 4.20m (13'9")

En-suite 1.80m (5'11") x 1.50m (4'11")
 Bedroom 2 4.60m (15'1") x 2.60m (8'6")
 Bathroom 2.30m (7'7") x 1.60m (5'3")

Gross internal floor area (m²): 71m²
 EPC Rating: B

