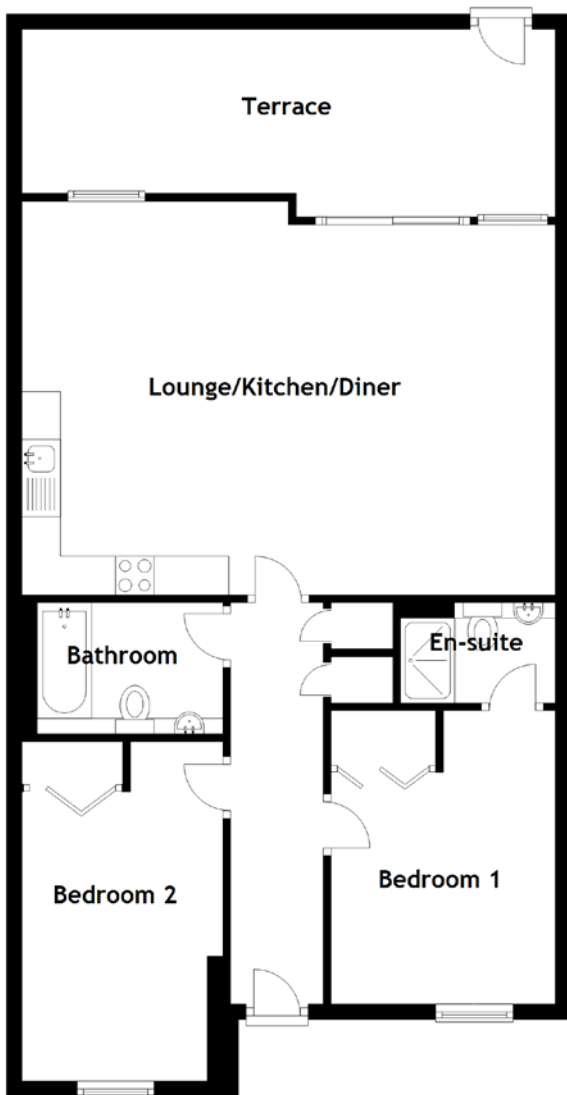


FLOOR PLAN, DIMENSIONS & MAP



Approximate Dimensions
(Taken from the widest point)

Lounge/Kitchen/Diner	6.90m (22'8") x 5.10m (16'9")
Bedroom 1	3.80m (12'6") x 2.90m (9'6")
En-suite	2.00m (6'7") x 1.30m (4'3")
Bedroom 2	4.40m (14'5") x 2.60m (8'6")
Bathroom	2.40m (7'10") x 1.70m (5'7")

Gross internal floor area (m²): 78m²

EPC Rating: B

