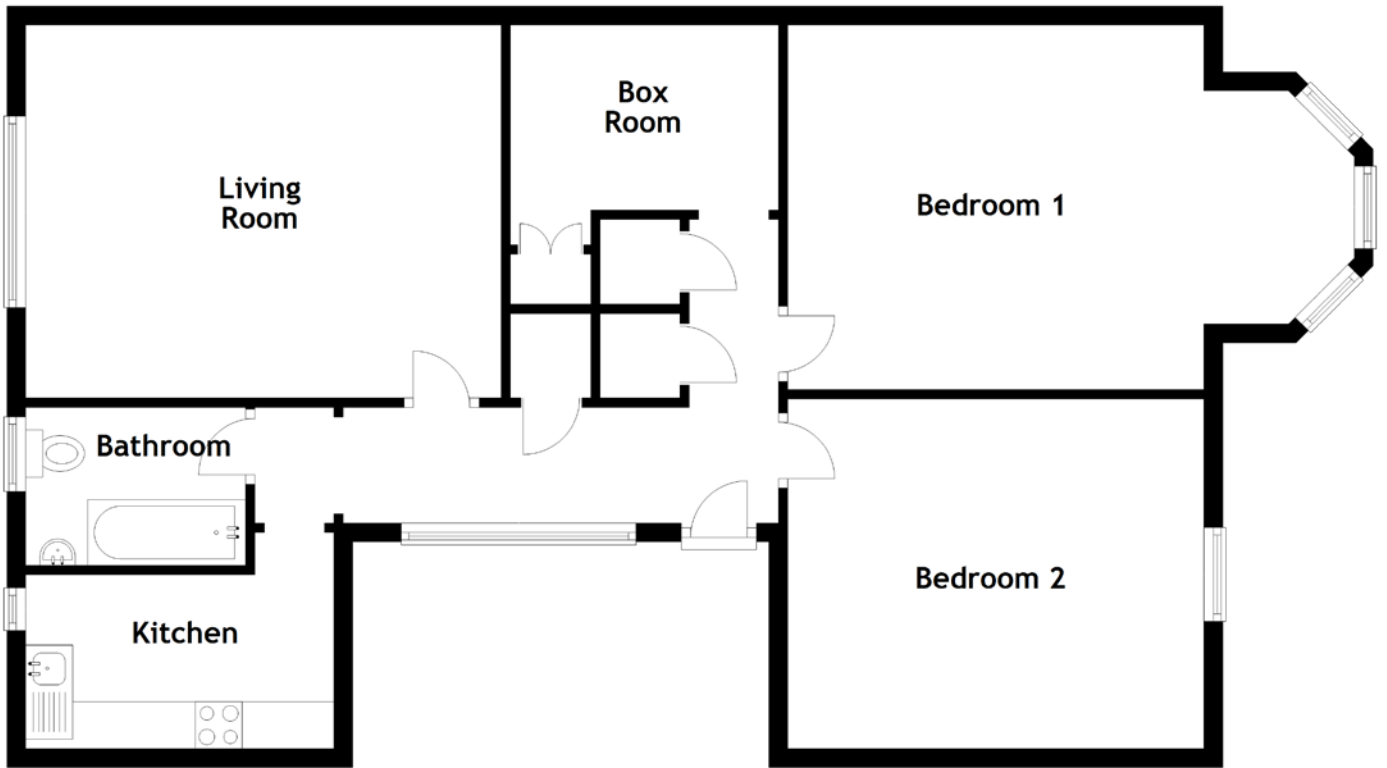


FLOOR PLAN, DIMENSIONS & MAP



Approximate Dimensions
(Taken from the widest point)

Living Room 5.06m (16'7") x 3.97m (13')
Kitchen 3.28m (10'9") x 2.30m (7'7")
Bedroom 1 6.03m (19'9") x 3.88m (12'9")

Bedroom 2 4.43m (14'6") x 3.68m (12'1")
Box Room 2.85m (9'4") x 2.34m (7'8")
Bathroom 2.34m (7'8") x 1.68m (5'6")

Gross internal floor area (m²): 90m²
EPC Rating: D

