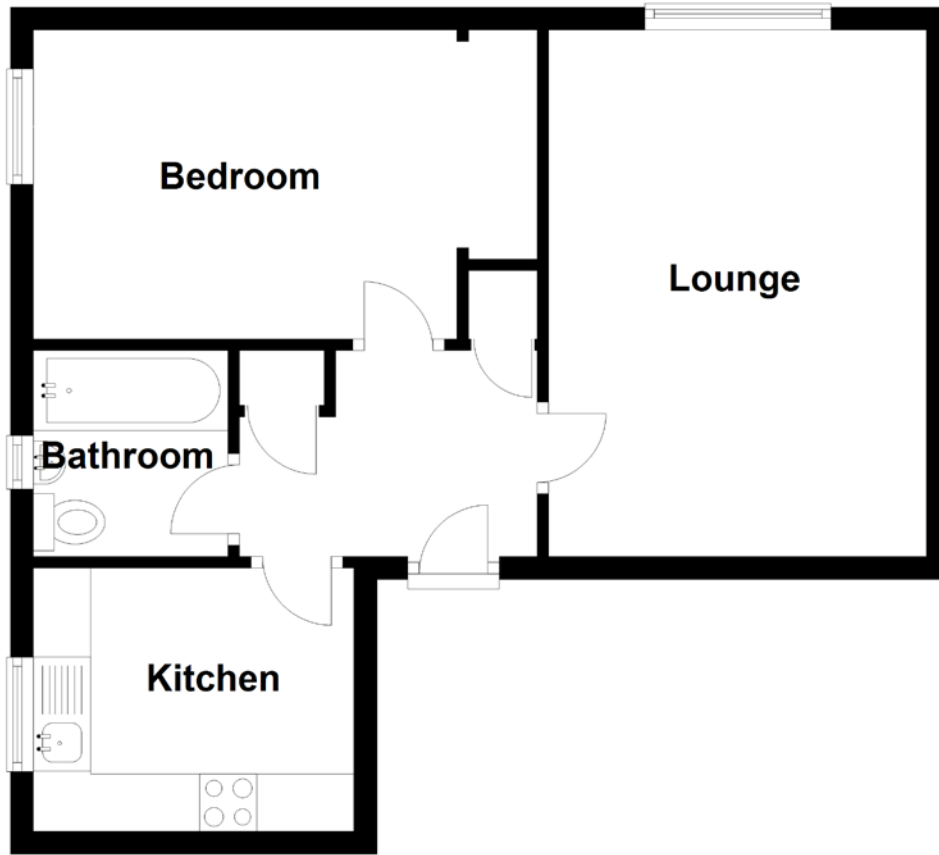


FLOOR PLAN, DIMENSIONS & MAP



Approximate Dimensions
(Taken from the widest point)

Lounge 4.60m (15'1") x 3.30m (10'10")
Bathroom 1.80m (5'11") x 1.70m (5'7")

Bedroom 3.70m (12'2") x 2.70m (8'10")
Kitchen 2.80m (9'2") x 2.30m (7'7")

Gross internal floor area (m²): 45m²
EPC Rating: D

