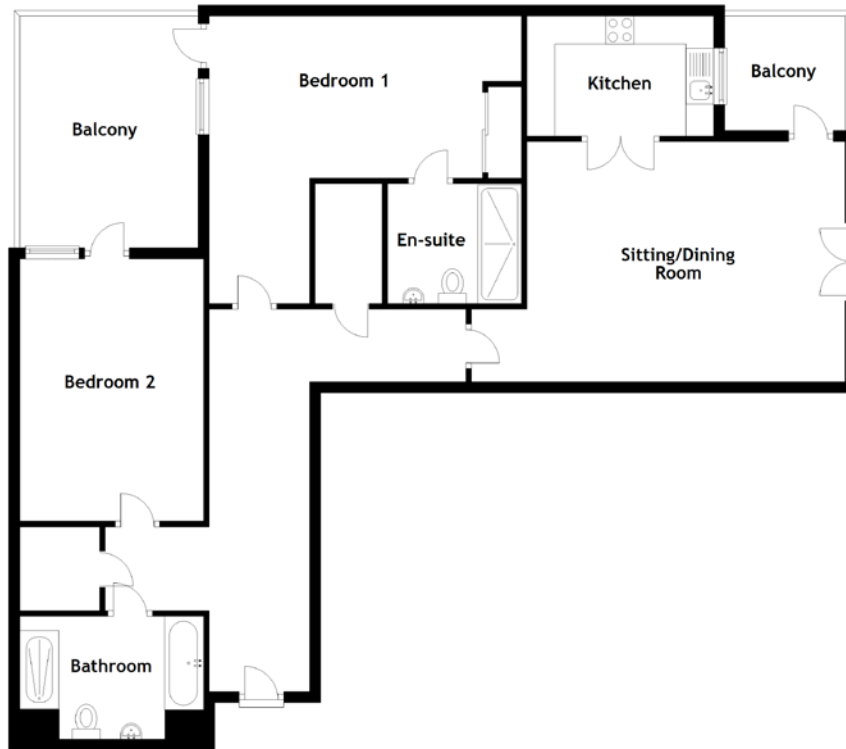


FLOOR PLAN, DIMENSIONS & MAP



Approximate Dimensions (Taken from the widest point)

Sitting/Dining Room	6.70m (22') x 4.30m (14'1")	Balcony	4.15m (13'7") x 3.20m (10'6")
Balcony	2.15m (7'1") x 2.05m (6'9")	Bedroom 2	4.70m (15'5") x 3.30m (10'10")
Kitchen	3.35m (11') x 2.15m (7'1")	Bathroom	3.25m (10'8") x 2.20m (7'3")
Bedroom 1	5.60m (18'4") x 5.20m (17'1")	Gross internal floor area (m ²): 94m ²	
En-suite	2.40m (7'10") x 2.15m (7'1")	EPC Rating: B	

