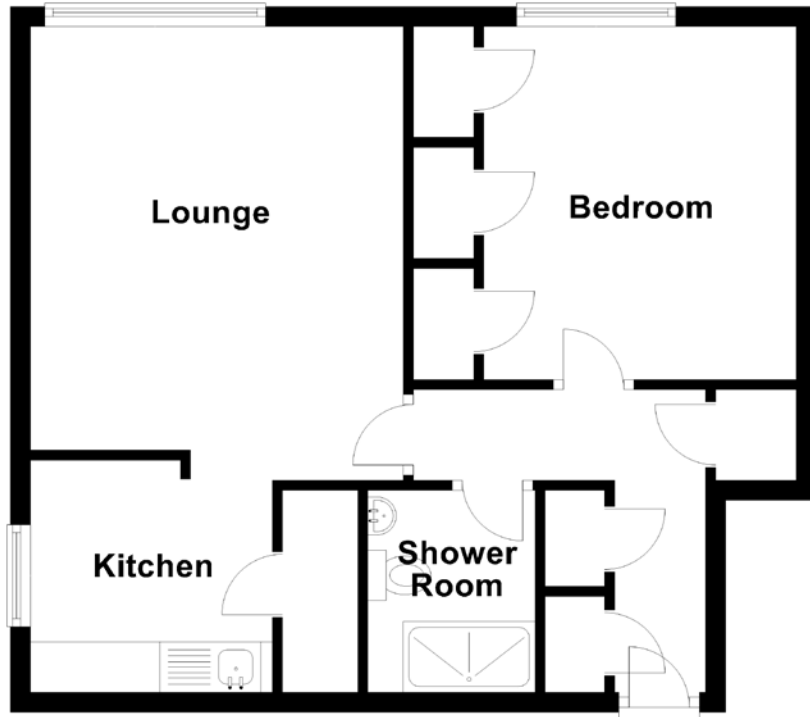


FLOOR PLAN, DIMENSIONS & MAP



Approximate Dimensions
(Taken from the widest point)

Lounge 4.40m (14'5") x 3.70m (12'2")
Kitchen 2.40m (7'10") x 2.30m (7'7")

Bedroom 3.50m (11'6") x 3.10m (10'2")
Shower Room 2.00m (6'7") x 1.66m (5'5")

Gross internal floor area (m²): 46m²
EPC Rating: D

