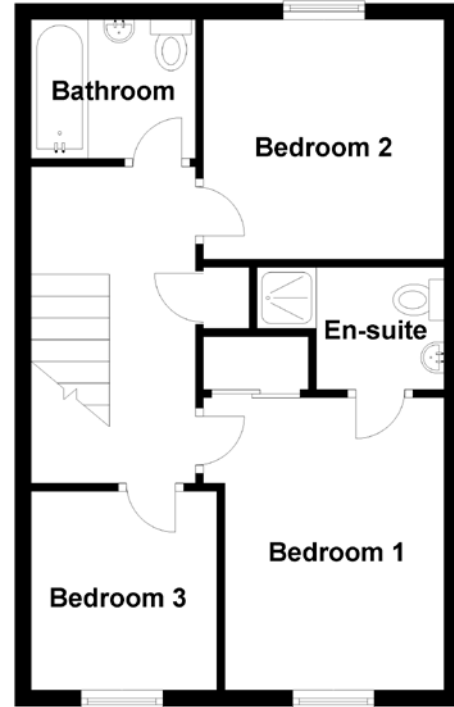
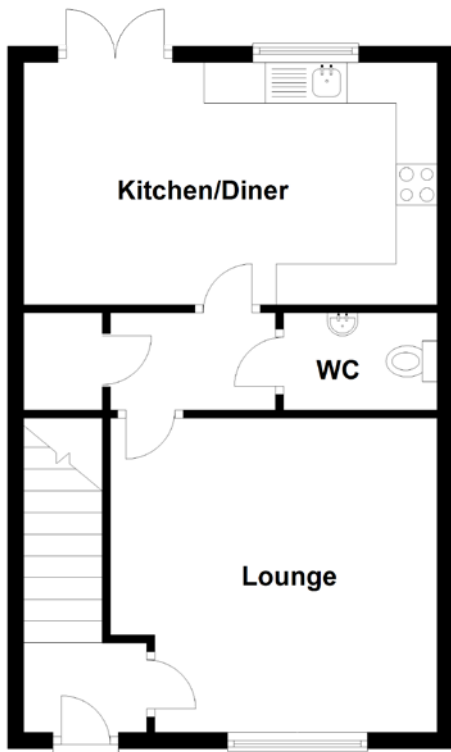


FLOOR PLAN, DIMENSIONS & MAP



Approximate Dimensions (Taken from the widest point)

Lounge	4.00m (13'1") x 3.85m (12'8")
Kitchen/Diner	5.06m (16'7") x 2.97m (9'9")
WC	1.88m (6'2") x 1.19m (3'11")
Bedroom 1	3.58m (11'9") x 2.95m (9'8")
En-suite	2.29m (7'6") x 1.43m (4'8")
Bedroom 2	2.95m (9'8") x 2.93m (9'7")
Bedroom 3	2.43m (8') x 2.27m (7'6")

Bathroom

2.09m (6'10") x 1.70m (5'7")

Gross internal floor area (m²): 84m²
EPC Rating: D

Extras (Included in the sale): Selected fixtures and fittings, including; blinds, curtains, light fittings, carpets and fitted floor coverings. Please note, other items may be available through separate negotiation.

