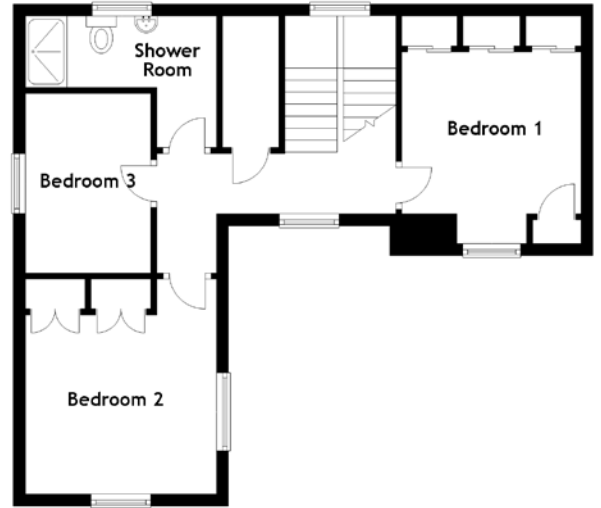
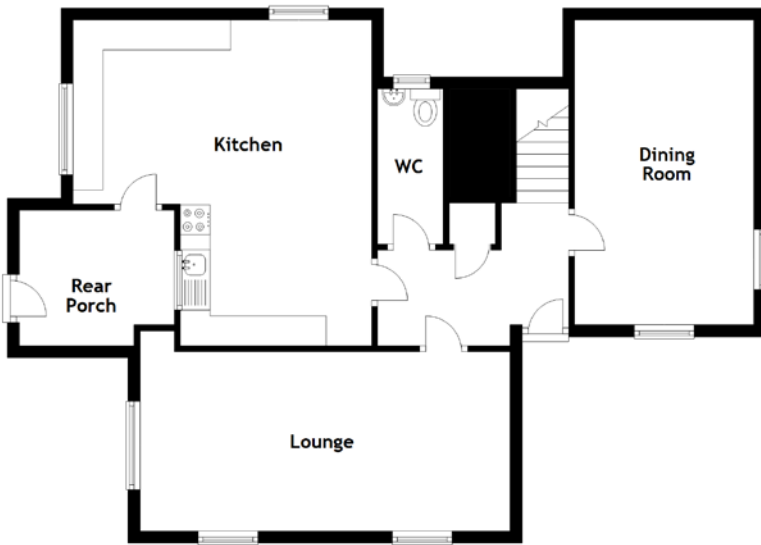


# FLOOR PLAN, DIMENSIONS & MAP



Approximate Dimensions  
(Taken from the widest point)

Lounge	6.20m (20'4") x 3.00m (9'10")
Dining Room	5.10m (16'9") x 3.00m (9'10")
Kitchen	5.50m (18'1") x 5.00m (16'5")
WC	2.60m (8'6") x 1.10m (3'7")

Shower Room	2.90m (9'6") x 2.20m (7'3")
Bedroom 1	3.21m (10'6") x 3.00m (9'10")
Bedroom 2	3.20m (10'6") x 3.00m (9'10")
Bedroom 3	3.00m (9'10") x 2.10m (6'11")

Gross internal floor area (m<sup>2</sup>): 111m<sup>2</sup>  
EPC Rating: E

