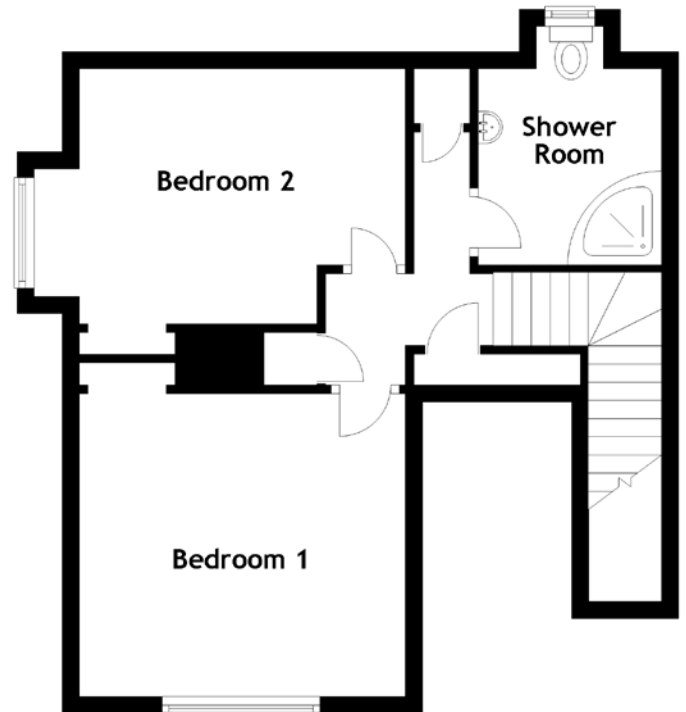
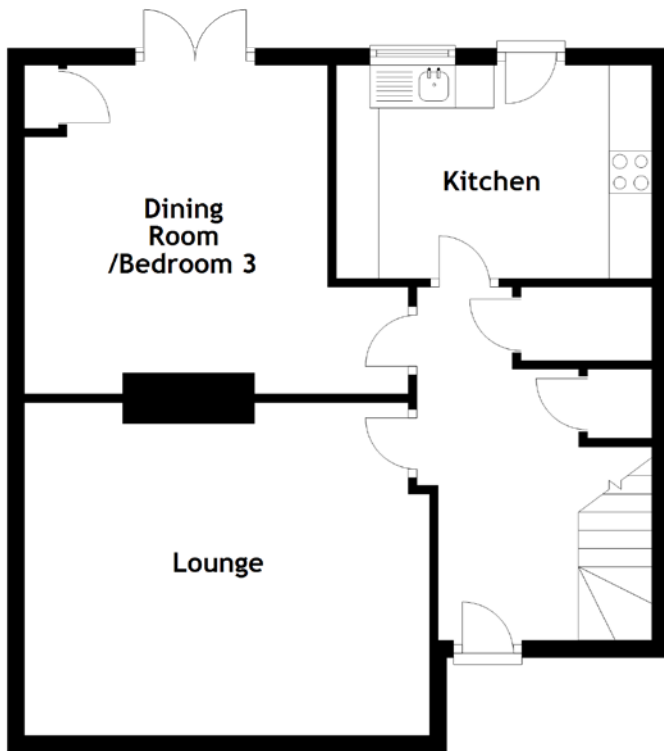


# FLOOR PLAN, DIMENSIONS & MAP



Approximate Dimensions (Taken from the widest point)

Lounge	4.75m (15'7") x 3.90m (12'10")
Kitchen	3.70m (12'2") x 2.50m (8'2")
Dining Room/Bed 3	4.75m (15'7") x 3.85m (12'8")
Bedroom 1	3.82m (12'6") x 3.55m (11'8")
Bedroom 2	4.65m (15'3") x 3.00m (9'10")

Shower Room

2.80m (9'2") x 2.15m (7'1")

Gross internal floor area (m<sup>2</sup>): 96m<sup>2</sup>  
EPC Rating: D

Extras (Included in the sale): Floor coverings, light fittings and window dressings.

