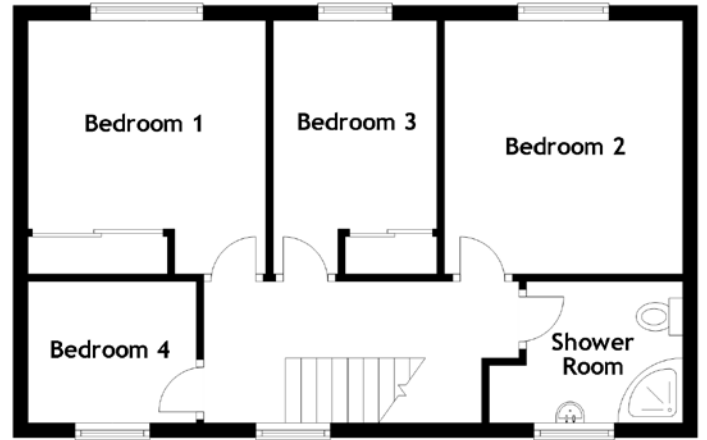
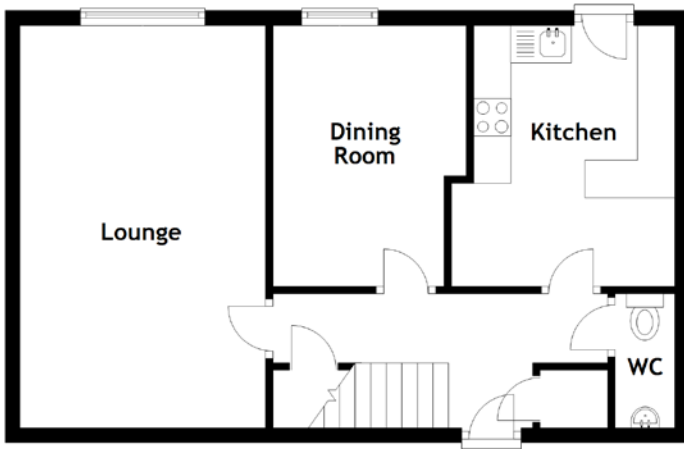


FLOOR PLAN, DIMENSIONS & MAP



Approximate Dimensions
(Taken from the widest point)

Lounge	5.40m (17'9") x 3.30m (10'10")
Dining Room	3.50m (11'6") x 2.60m (8'6")
Kitchen	3.50m (11'6") x 3.00m (9'10")
WC	1.70m (5'7") x 0.80m (2'7")
Bedroom 1	3.40m (11'2") x 3.30m (10'10")

Bedroom 2	3.40m (11'2") x 3.20m (10'6")
Bedroom 3	3.40m (11'2") x 2.20m (7'3")
Bedroom 4	2.50m (8'2") x 1.80m (5'11")
Shower Room	2.10m (6'11") x 1.80m (5'11")

Gross internal floor area (m²): 95m²
EPC Rating: C

