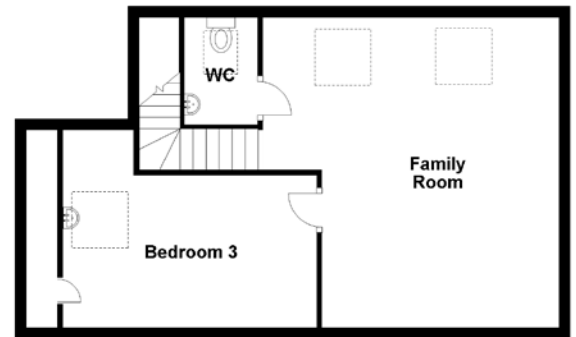


FLOOR PLAN, DIMENSIONS & MAP



Approximate Dimensions (Taken from the widest point)

Lounge	4.50m (14'9") x 4.50m (14'9")
Dining Room	4.00m (13'1") x 3.30m (10'10")
Kitchen	4.00m (13'1") x 2.60m (8'6")
Sun Room	3.30m (10'10") x 2.60m (8'6")
Bathroom	2.50m (8'2") x 1.45m (4'9")
Bedroom 1	4.00m (13'1") x 3.95m (13')

Bedroom 2	3.85m (12'8") x 2.70m (8'10")
Family Room	5.50m (18'1") x 5.25m (17'3")
WC	1.90m (6'3") x 1.30m (4'3")
Bedroom 3	4.50m (14'9") x 3.50m (11'6")
Garage	5.15m (16'11") x 2.80m (9'2")

Gross internal floor area (m²): 126m²
EPC Rating: E

