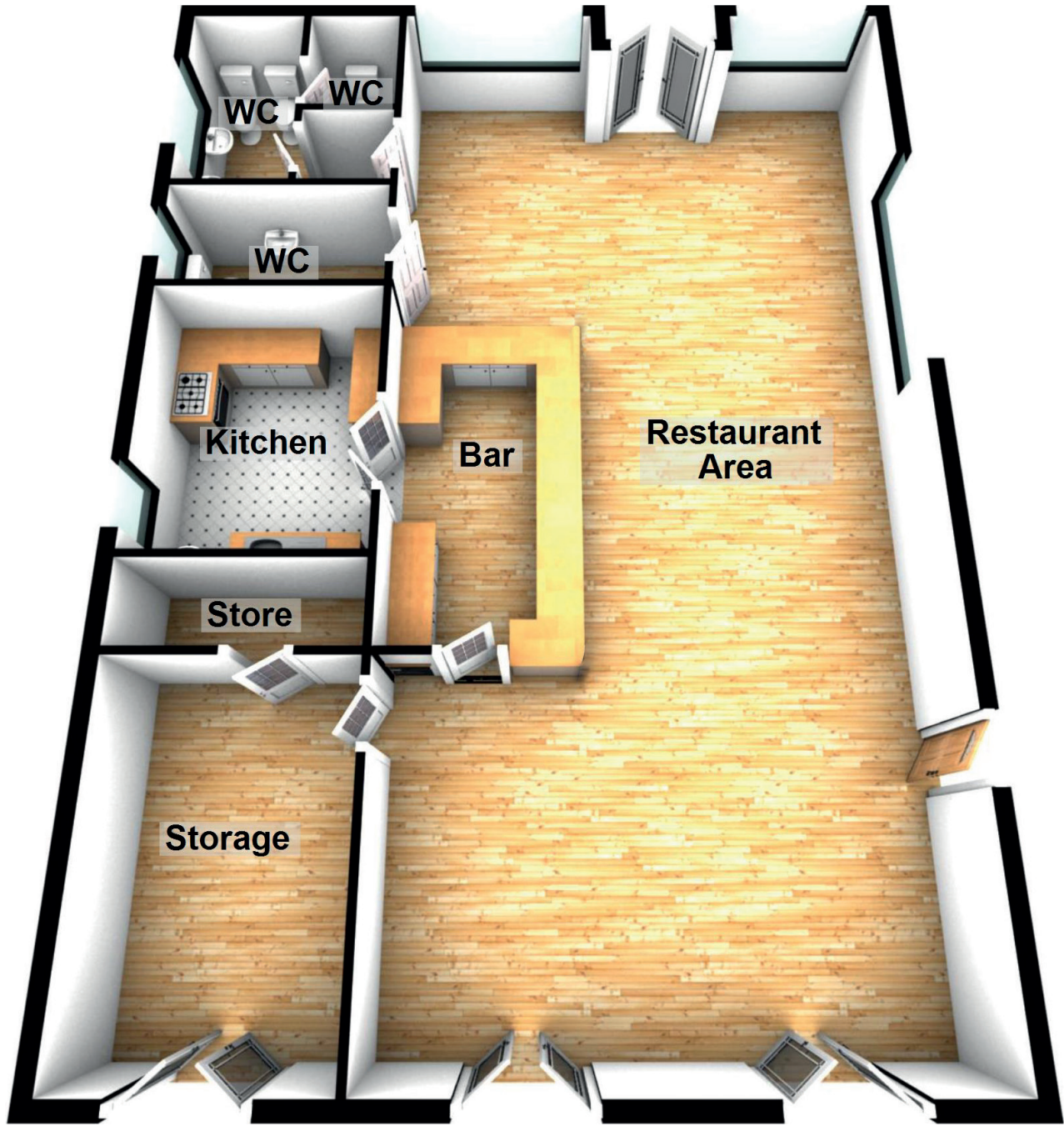


Approximate Dimensions
(Taken from the widest point)

Restaurant Area	13.10m (43') x 6.40m (21')
Storage	4.20m (13'9") x 2.80m (9'2")
Kitchen	3.40m (11'2") x 2.70m (8'10")
WC	2.70m (8'10") x 1.40m (4'7")
WC	2.60m (8'6") x 1.50m (4'11")
WC	1.50m (4'11") x 1.20m (3'11")

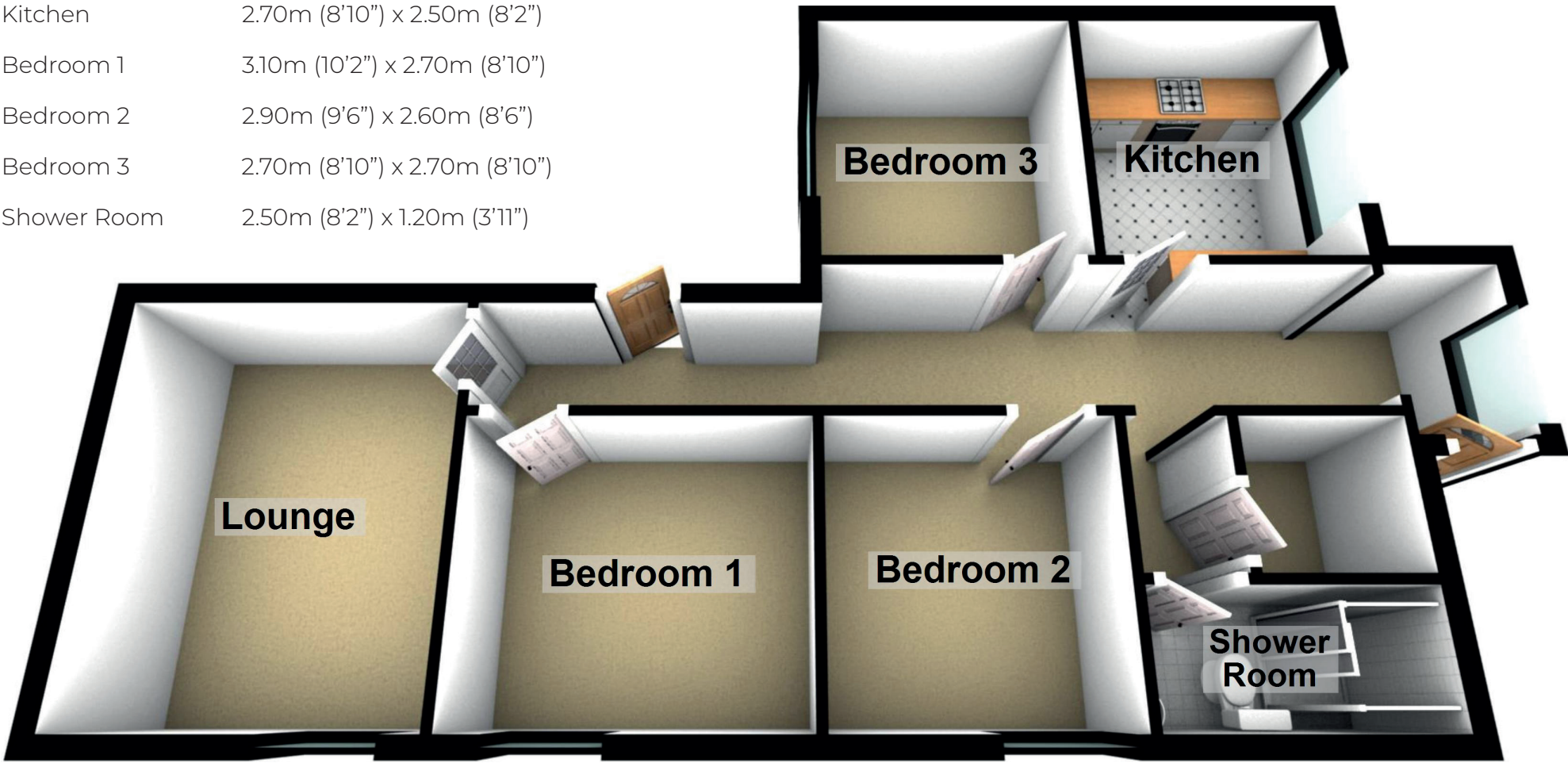
Services - Mains gas, electricity and water
Tenure - Freehold



THE LODGE BAR & RESTAURANT

Approximate Dimensions
(Taken from the widest point)

Lounge	3.80m (12'6") x 3.10m (10'2")
Kitchen	2.70m (8'10") x 2.50m (8'2")
Bedroom 1	3.10m (10'2") x 2.70m (8'10")
Bedroom 2	2.90m (9'6") x 2.60m (8'6")
Bedroom 3	2.70m (8'10") x 2.70m (8'10")
Shower Room	2.50m (8'2") x 1.20m (3'11")



THE LODGE - BUNGALOW