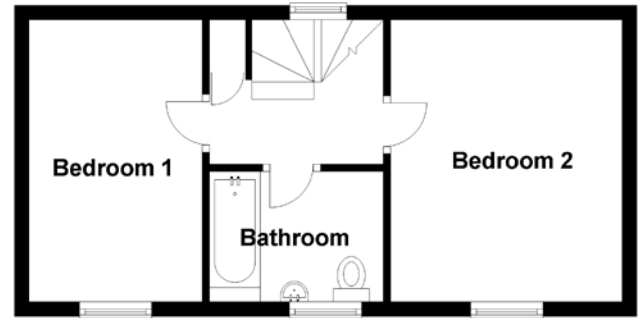
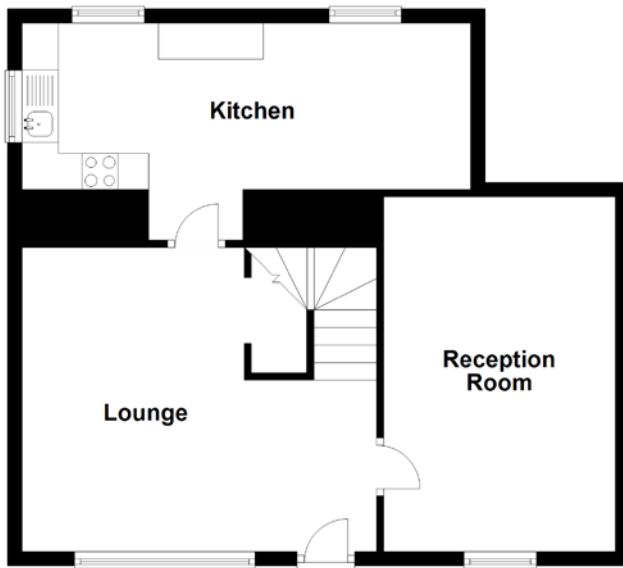


# FLOOR PLAN, DIMENSIONS & MAP



Approximate Dimensions  
(Taken from the widest point)

Lounge	4.90m (16'1") x 4.20m (13'9")
Reception Room	4.20m (13'9") x 3.20m (10'6")
Kitchen	6.20m (20'4") x 2.30m (7'7")

Bedroom 1	3.90m (12'9") x 2.40m (7'10")
Bedroom 2	3.80m (12'6") x 3.10m (10'2")
Bathroom	2.40m (7'11") x 1.80m (5'11")

Gross internal floor area (m<sup>2</sup>): 78m<sup>2</sup>  
EPC Rating: F

