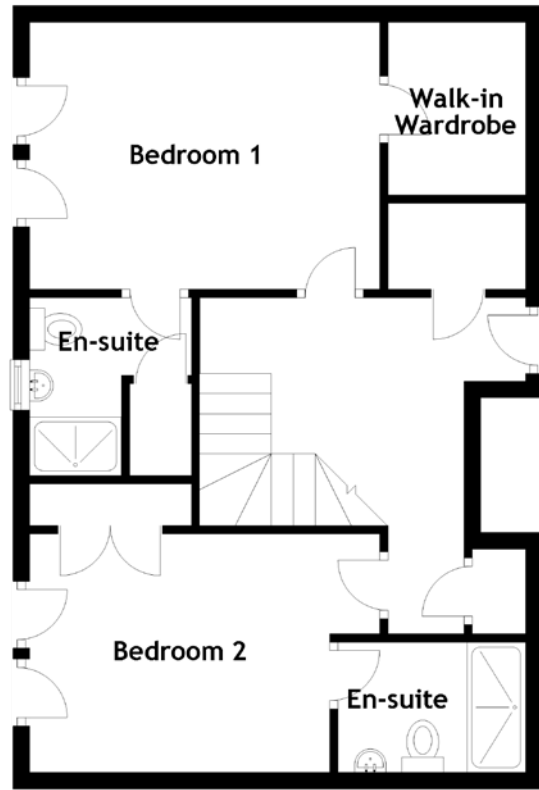
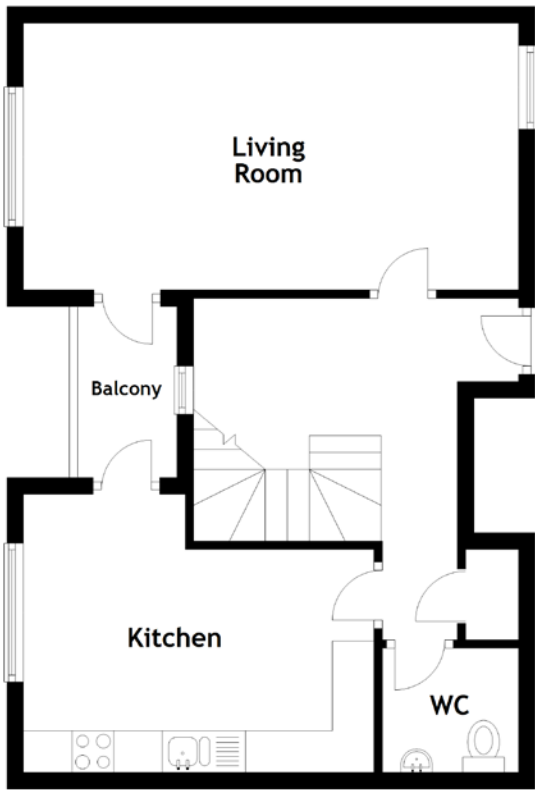


FLOOR PLAN, DIMENSIONS & MAP



Approximate Dimensions (Taken from the widest point)

| | |
|-------------|---------------------------------|
| Living Room | 5.94m (19'6") x 3.20m (10'6") |
| Balcony | 2.25m (7'5") x 1.29m (4'3") |
| Kitchen | 4.21m (13'10") x 3.34m (10'11") |
| WC | 1.62m (5'4") x 1.49m (4'11") |
| Bedroom 1 | 4.19m (13'9") x 3.20m (10'6") |

Walk-in Wardrobe

2.07m (6'9") x 1.67m (5'6")

En-suite

2.73m (8'11") x 2.18m (7'2")

Bedroom 2

4.19m (13'9") x 2.86m (9'5")

En-suite

2.25m (7'4") x 1.56m (5'1")

Gross internal floor area (m²): 104m²

EPC Rating: B

